

For Sale

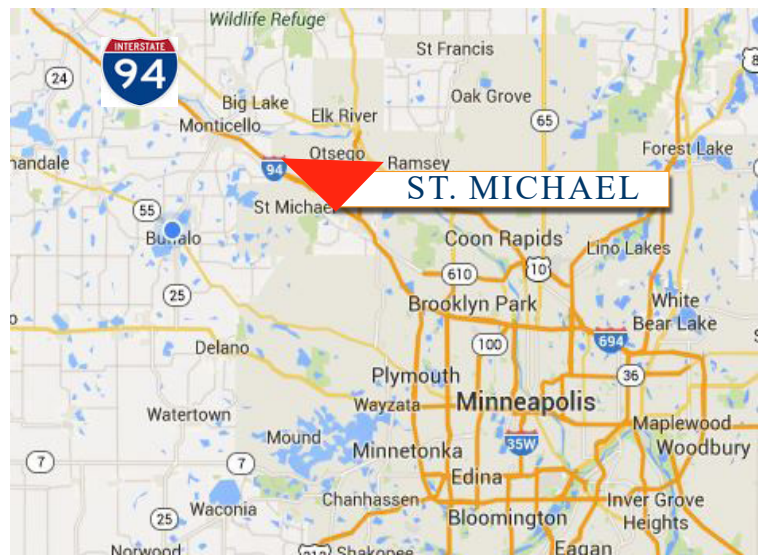
Future Residential Development Land

9485 30th St. NE, St. Michael 55376



PROPERTY INFORMATION

- * Sales Price **\$32,500.00/acre**
- * Parcel is 40 Acres
- * Wright County PID 114-500-221101
- * 2018 Taxes \$4,226.00
- * Zoning: A-1 General Agriculture
- * Sewer & Water Available at Property Boundary
- * Maple Grove is 20 minutes away
- * Businesses in the area include:
Walgreen's, Main Street Farmer Restaurant,
Ditto's Bar, State Farm Insurance, Midwest One
Bank, CVS, Wells Fargo Bank, St. Michael -
Albertville Elementary School, Marketplace
Grocery and more



Contact:

SHEILA ZACHMAN

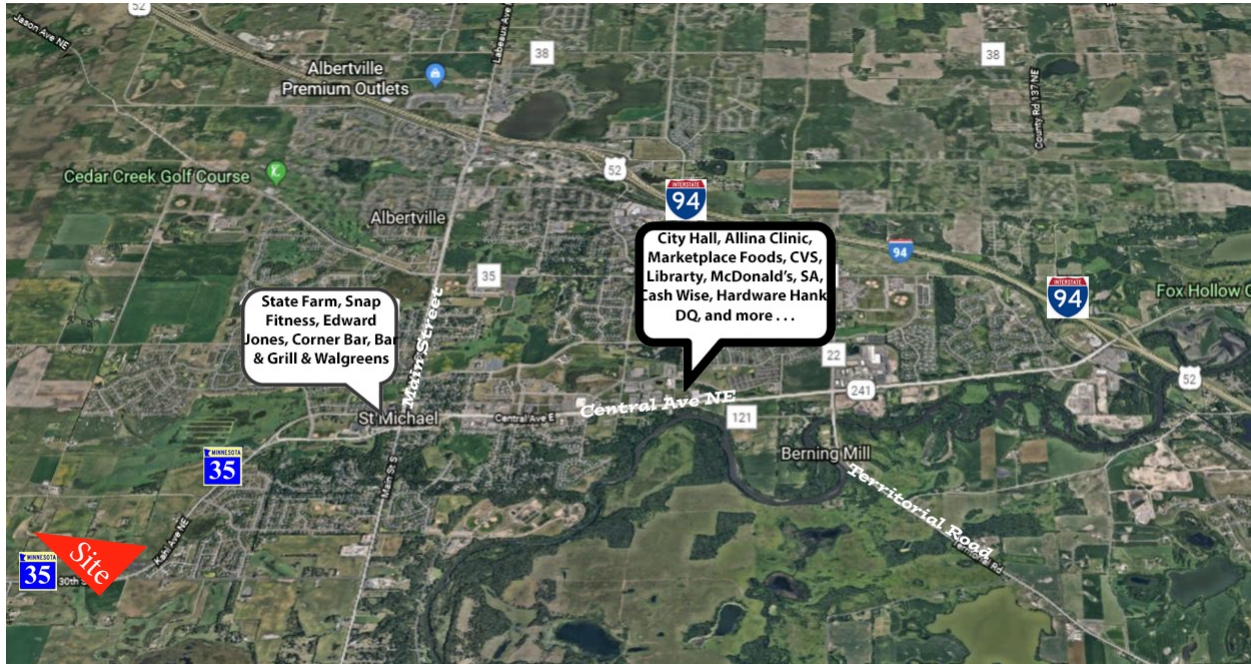
(763) 244-0600

SZachman@commrealtysolutions.com



COMMERCIAL REALTY SOLUTIONS

For Sale Future Residential Development Land 9485 30th St. NE, St. Michael 55376



PROPERTY INFORMATION

- * St. Michael is centrally located between St. Cloud and Minneapolis along I-94
- * Convenient location to I-94, County Road 241 and C.R. 19/Labeaux Avenue
- * 25 Miles to Downtown Minneapolis
- * Located near City offices, shopping and services
- * Close to St. Michael-Albertville Schools



TRAFFIC COUNTS - 2017

- * Main Street - 12,800 VPD
- * Highway 241 - 22,200 VPD
- * I-94 - 68,000 VPD

Contact:

SHEILA ZACHMAN

(763) 244-0600

SZachman@commrealtysolutions.com