



COMMERCIAL REALTY SOLUTIONS
www.commrealtysolutions.com

Monticello - Residential Development Land FOR SALE

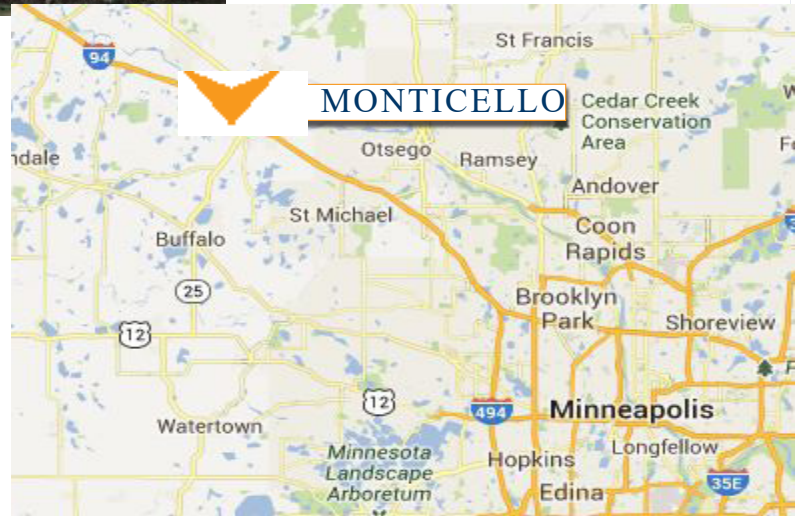
xxx School Blvd W., Monticello, MN 55362



Close to
WalMart, Applebee's,
Culvers, Theatre and
Bowling Alley

PROPERTY INFORMATION

- * Sales Price **\$2.8 Million**
- * Parcel is 68 Acres
- * Wright County PID's
- * 213-100-153100 2017 Taxes \$4,100.00
- * 213-100-151400 2017 Taxes \$1,020.00
- * Zoned: R-1 Single Family Residential
- * City fiber optics network providing high-speed internet, telephone and cable.
- * Growing and progressive community!
- * Great place to live, work and play!
- * Businesses in the area include:
River City Extreme, Mueller Theater, Taco John's, Applebee's, Culver's, Premier Bank, WalMart Super Center, Aldi's, Buffalo Wild Wings and much more!



Contact:

WAYNE ELAM
(763) 229-4982

WElam@commrealtysolutions.com



3 Highway 55 West, Buffalo, MN 55313

office 763 682 2400 fax 763 682 4524

www.commrealtysolutions.com

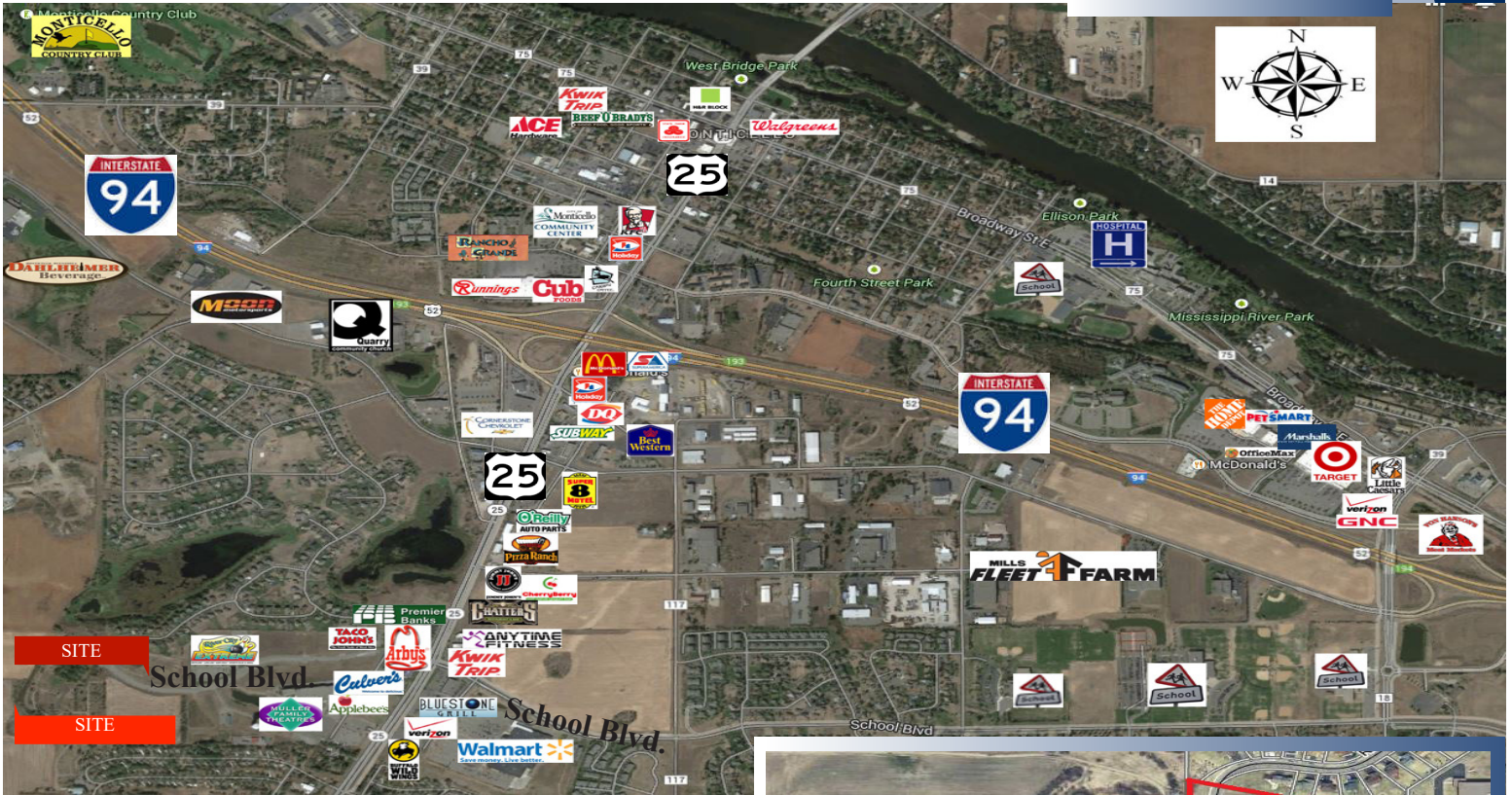
Monticello - Residential Development Land FOR SALE

xxx School Blvd W., Monticello, MN 55362

TRAFFIC COUNTS - 2017

* I-94 - 53,000 VPD

**Minutes from
I-94!**



PROPERTY INFORMATION

- * Located West of Highway 25 on School Blvd.
- * South side of I-94
- * Just 20 Minutes from Maple Grove



Contact:

WAYNE ELAM
(763) 229-4982

WElam@commrealtysolutions.com



3 Highway 55 West, Buffalo, MN 55313

office 763 682 2400

fax 763 682 4524

www.commrealtysolutions.com