



COMMERCIAL REALTY SOLUTIONS
www.commrealtysolutions.com

Monticello - Industrial Land FOR SALE

xxx Chelsea Road, Monticello, MN 55362

**HUGE PRICE
REDUCTION**

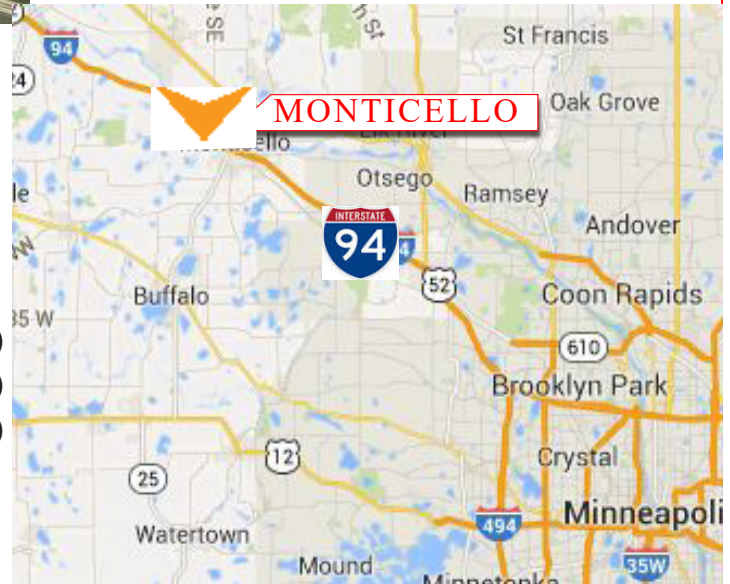


Otter Creek Crossing

**715' of I-94
Frontage**

PROPERTY INFORMATION

- * Sales Price \$3.00/PSF (Plus Assessments)
Reduced to **\$1.00/psf** (Plus Assessments)
- * 17.96 Acres (Divisible)
(Additional Acreage Available)
- * Wright County
PID 155-248-001030 2019 Taxes \$354.00 (8.02 Acre)
PID 155-248-001020 2019 Taxes \$246.00 (4.98 Acre)
PID 155-248-001010 2019 Taxes \$244.00 (4.96 Acre)
- * Financing incentives available!
- * City incentives include TIF and Job Creation Credit
- * FiberNet Monticello is available
- * Near Restaurants and Major Retailers
- * Easy Access to I-94 and Highway 25
- * Located on Chelsea Road (the primary interconnect for the interchanges)
- * Zoning is IBC, Industrial Business Campus



Contact:
WAYNE ELAM
(763) 229-4982

WElam@commrealtysolutions.com

3 Highway 55 West, Buffalo, MN 55313

office 763 682 2400 fax 763 682 4524

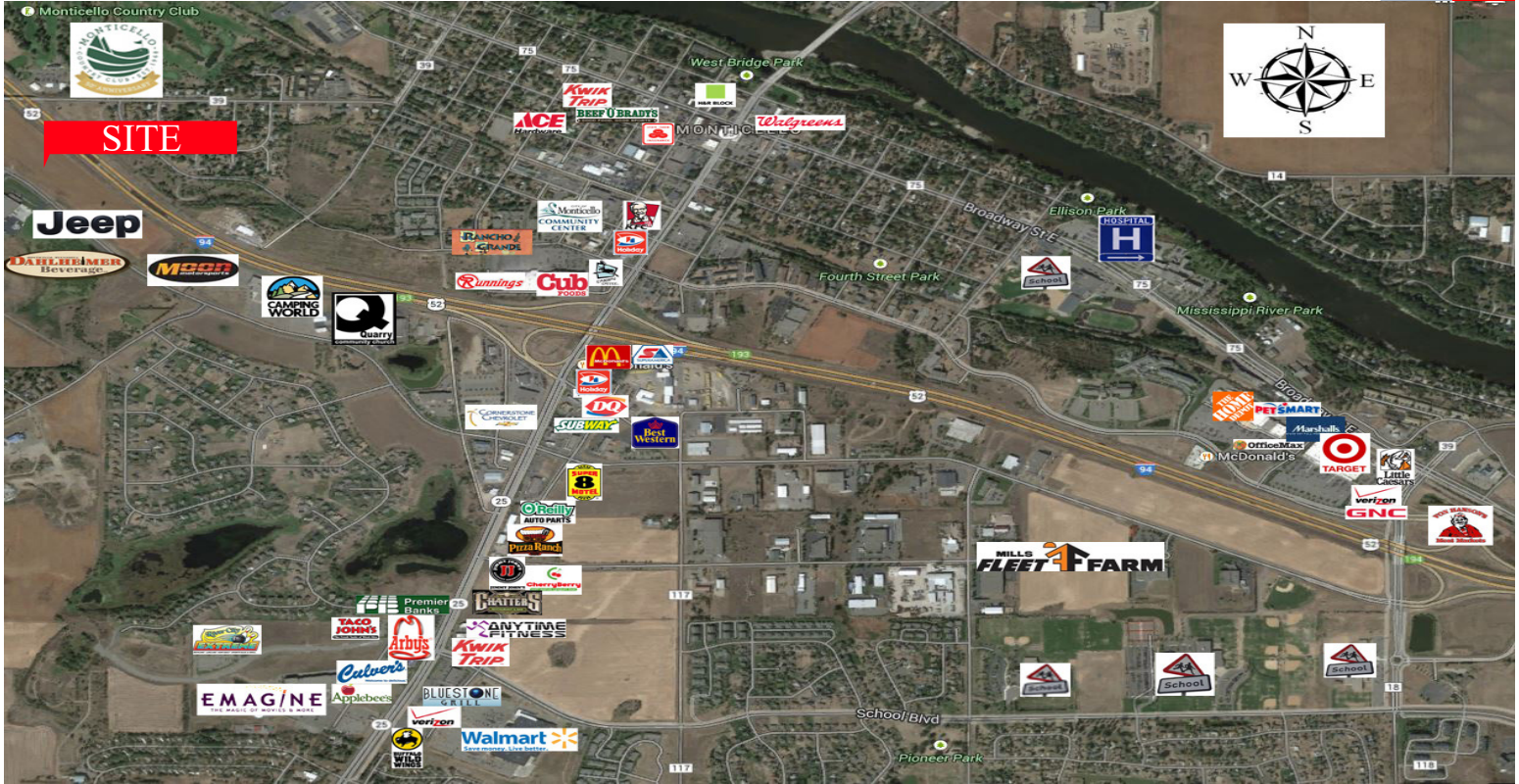
www.commrealtysolutions.com

Monticello - Commercial Land

FOR SALE

xxx Chelsea Road, Monticello, MN 55362

I-94 Visibility



PROPERTY INFORMATION

- * Quick and easy access to I-94
- * Major retailers in the area!
- * City fiber optics available!

Monticello Demographics			
Demographics - 2017	1-Mile	3-Mile	5-Mile
Population	6,523	17,185	36,142
Average Age	38	39	40
Average Household Inc.	\$ 55,839	\$ 55,039	\$ 57,565
Median Household Inc.	\$ 50,781	\$ 50,205	\$ 52,978

TRAFFIC COUNTS - 2018

- * I-94 - 56,000 VPD
- * Highway 25 - 26,500 VPD
- * Chelsea Road - 3,950 VPD



Contact:

WAYNE ELAM
(763) 229-4982

WElam@commrealtysolutions.com

3 Highway 55 West, Buffalo, MN 55313

office 763 682 2400 fax 763 682 4524

www.commrealtysolutions.com

Monticello - Commercial Land

FOR SALE

xxx Chelsea Road, Monticello, MN 55362

Contact:
WAYNE ELAM
(763) 229-4982



Great Interstate Frontage



Suburban Manufacturing

Adjoining property Owner's



Dahlheimer Distributing



3 Highway 55 West, Buffalo, MN 55313

office 763 682 2400 fax 763 682 4524

www.commrealtysolutions.com