



COMMERCIAL REALTY SOLUTIONS
www.commrealtysolutions.com

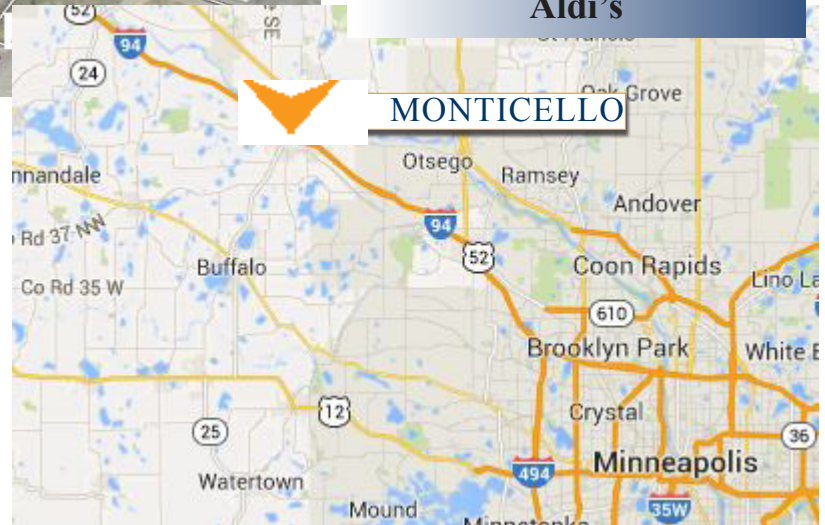
Monticello - Commercial Land

FOR SALE

xxx S. Deegan Ave., Monticello, MN 55362

**Excellent
Highway 25
Visibility!**

**Join the recent
retailers that have
built in Monticello:**
Mills Fleet
Goodwill
Auto Zone
Sherburne State Bank
Aspen Dental
Aldi's



PROPERTY INFORMATION

- * Sales Price **\$8.00/psf**
- * 2.7 Acre Parcel (Divisible)
- * Wright County PID 155-176-001020
- * Zoned B-4 Business District
- * Highway Visibility with easy access
- * Businesses in the area include:
River City Extreme, Applebee's, Arby's,
Taco John, Culver's, Kwik Trip, Walmart,
Premier Bank, Buffalo Wild Wing's, O'Reilly
Auto Parts, Muller Family Theatre, Auto
Zone, Goodwill, Aspen Dental, Aldi's and
much more!



Contact:

WAYNE ELAM
(763) 229-4982

WElam@commrealtysolutions.com

3 Highway 55 West, Buffalo, MN 55313

office 763 682 2400 fax 763 682 4524

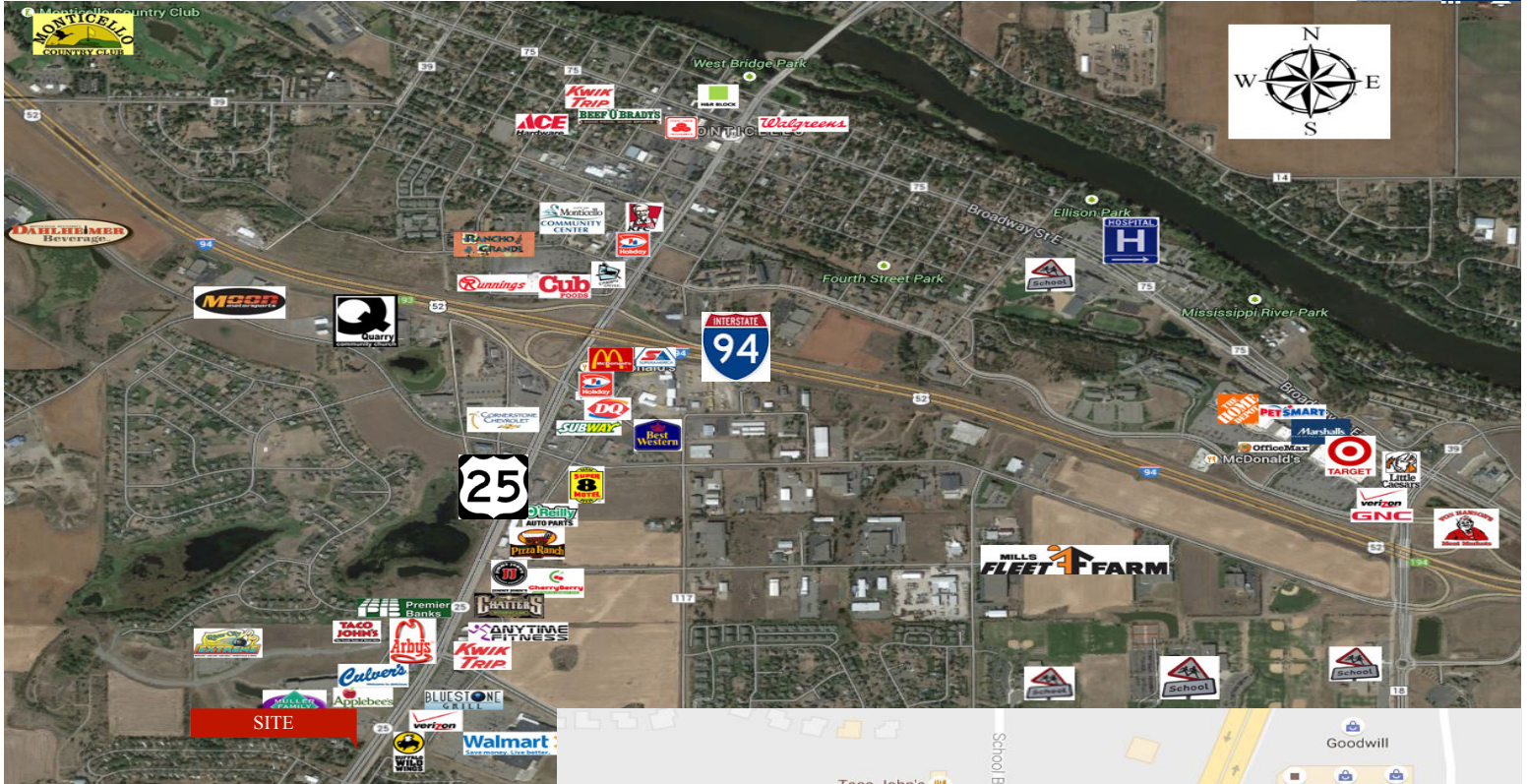
www.commrealtysolutions.com

Monticello - Commercial Land FOR SALE

xxx S. Deegan Ave., Monticello, MN 55362

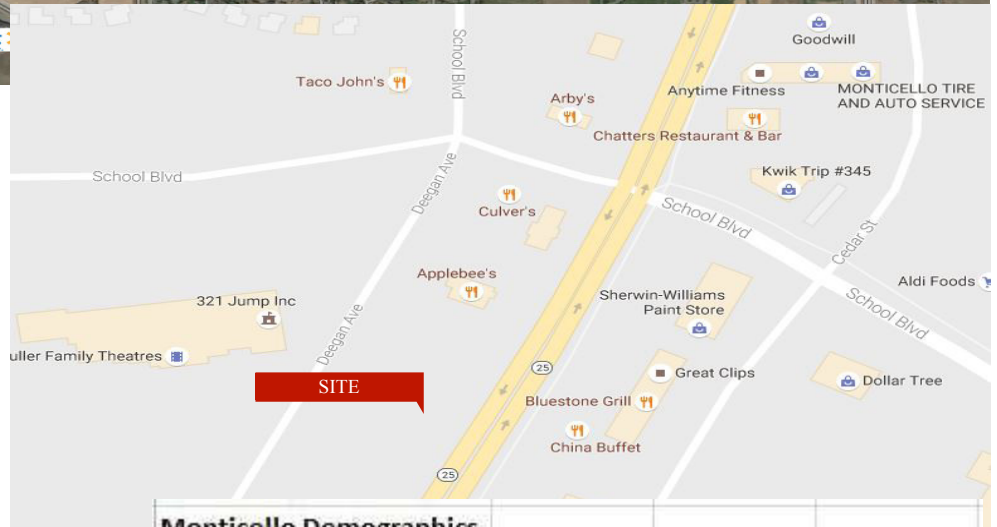
TRAFFIC COUNTS - 2016

- * I-94 - 44,000 VPD
- * Highway 25 - 27,500 VPD
- * School Blvd. - 1,350 VPD



PROPERTY INFORMATION

- * Located West of Highway 25
- * South side of I-94
- * Great Highway Visibility



Monticello Demographics				
Demographics - 2015	1-Mile	3-Mile	5-Mile	
Population	6,523	17,185	36,142	
Average Age	38	39	40	
Average Household Inc.	\$ 55,839	\$ 54,364	\$ 57,565	
Median Household Inc.	\$ 50,781	\$ 49,428	\$ 52,978	

Contact:

WAYNE ELAM
(763) 229-4982

WElam@commrealtysolutions.com



3 Highway 55 West, Buffalo, MN 55313

office 763 682 2400

fax 763 682 4524

www.commrealtysolutions.com