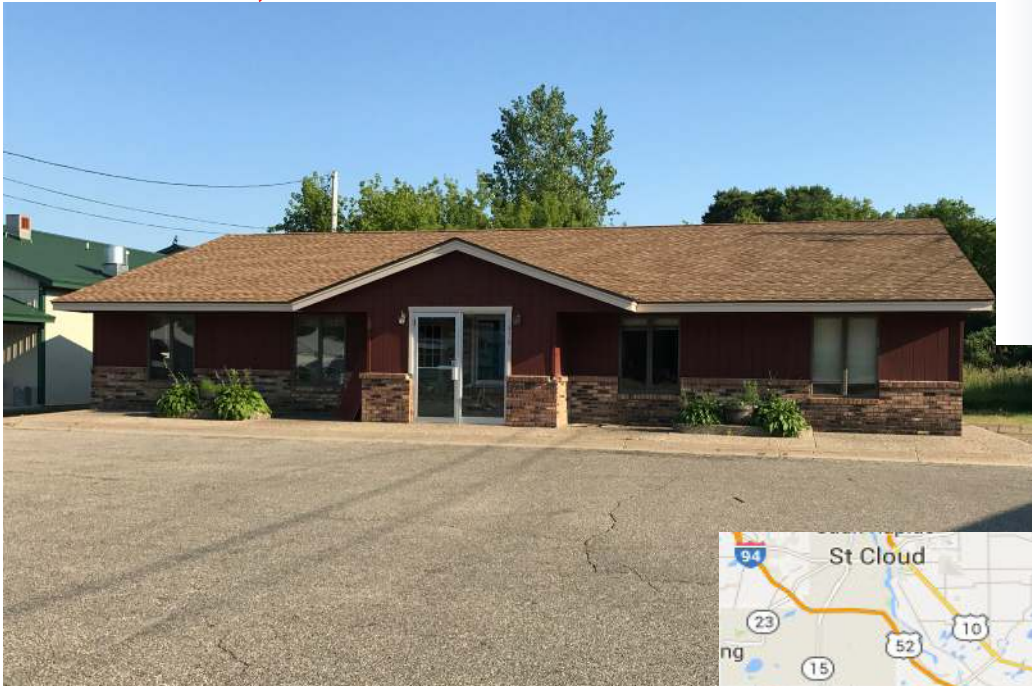




COMMERCIAL REALTY SOLUTIONS  
www.commrealtysolutions.com

## Dassel - Commercial Building FOR SALE

650 Parker Ave., Dassel, MN 55325



### Nice Office/ Professional Building

### PROPERTY INFORMATION

- \* Sales Price **\$180,000.00**
- \* 2,400/sf Commercial Building
- \* Lot is Appx. 1.21 Acres
- \* Nice Building with 9 Offices
- \* Highway 12 Visibility & Access
- \* Asphalt Parking
- \* Businesses in the area include:  
Jimmy's Pizza, Casey's Store, florist,  
Wells Fargo, churches and much more!



**Contact:**

**WAYNE ELAM**  
**(763) 229-4982**

**WElam@commrealtysolutions.com**



3 Highway 55 West, Buffalo, MN 55313

office 763 682 2400 fax 763 682 4524

www.commrealtysolutions.com

# Dassel - Commercial Building FOR SALE

650 Parker Ave., Dassel, MN 55325

**TRAFFIC COUNTS - 2017**

\* Highway 12 - 9,800 VPD



## PROPERTY INFORMATION

- \* Located on the South side of Highway 12
- \* 30 Miles South of I-94
- \* Close to Services and Shopping



Contact:  
**WAYNE ELAM**  
**(763) 229-4982**  
[WElam@commrealtysolutions.com](mailto:WElam@commrealtysolutions.com)

3 Highway 55 West, Buffalo, MN 55313

office 763 682 2400

fax 763 682 4524

[www.commrealtysolutions.com](http://www.commrealtysolutions.com)

Dassel - Commercial Building

# FOR SALE

650 Parker Ave., Dassel, MN 55325

Nine  
Offices



Contact:

**WAYNE ELAM**

**(763) 229-4982**

**WElam@commrealtysolutions.com**



3 Highway 55 West, Buffalo, MN 55313

office 763 682 2400

fax 763 682 4524

[www.commrealtysolutions.com](http://www.commrealtysolutions.com)