



PROPERTY INFORMATION

- * Sales Price **\$599,000.00**
- * Lot is 16.54 Acres
- * Hennepin County PID 181-192-312-0001
- * 2019 Taxes \$2,768.00
- * Zoned: Rural Commercial
- * Businesses in the area include:
Doboszenski and Sons, Stormans Food and Fuel,
Ebert Construction, ESS Brothers and Sons,
Step by Step Montessori Schools of Corcoran

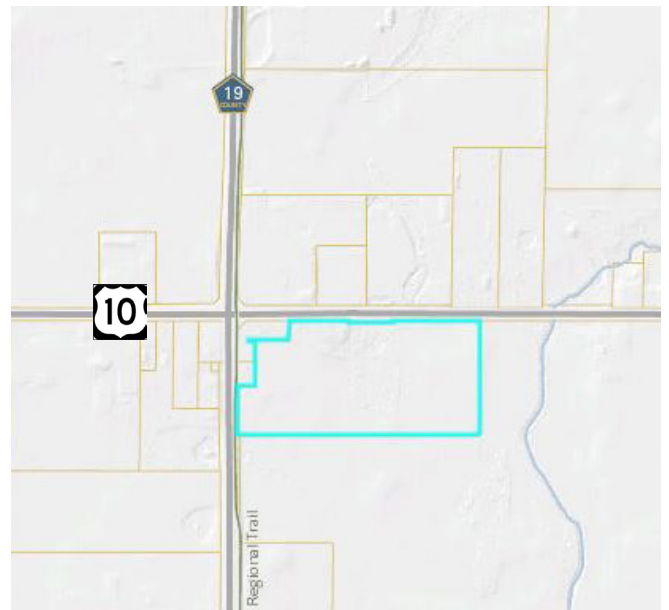


Contact:
WAYNE ELAM
(763) 229-4982
WElam@commrealtysolutions.com



PROPERTY INFORMATION

- * SE corner of County Rd 10 & County Rd 19
- * Buildings are teardowns
- * All development will be on well & septic
- * Distance to Major Highways:
 - * Hwy 55 - 7 miles
 - * 494 - 11 miles
 - * I-94 - 10 miles



TRAFFIC COUNTS - 2017

- * County Road 19 - 9,500 VPD
- * County Road 10 - 2,750 VPD

Contact:
WAYNE ELAM
(763) 229-4982
WElam@commrealtysolutions.com