



Buffalo - Commercial/Residential Land FOR SALE

C.R. 35 & C.R. 134, Buffalo, MN 55313

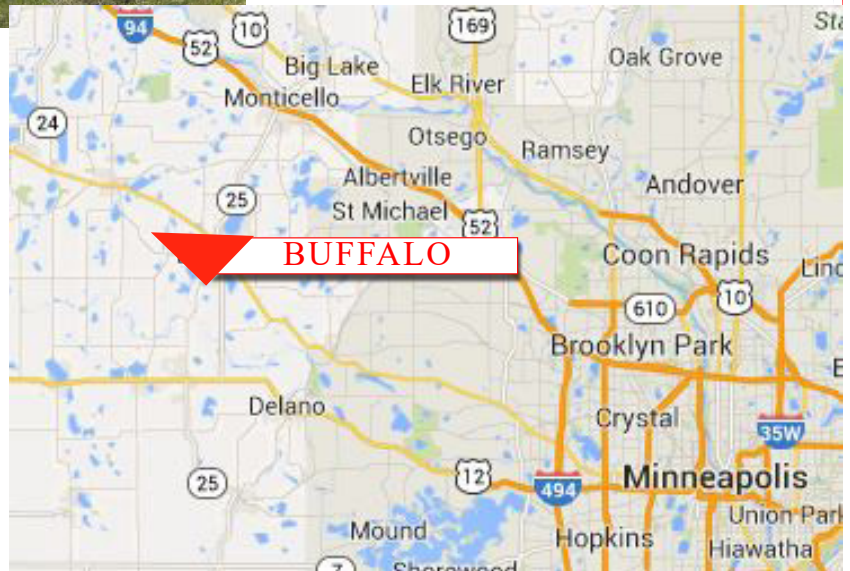
COMMERCIAL REALTY SOLUTIONS



Great corner
location!

PROPERTY INFORMATION

- * Sales Price **\$1.50/PSF**
- * 37 Acres - divisible
- * Wright County PID 202-000-282100
- * 2019 Taxes \$332.00 (Green Acres)
- * Wright County PID 202-000-282300
- * 2019 Taxes \$546.00 (Green Acres)
- * Current Zoning is Agriculture
- * Future Land Use is Commercial
- * Located East of Buffalo High School
- * Near Wells Fargo Bank, Buffalo Wine & Spirits, Cub Foods, Tires Plus, Culver's, McDonald's, Target, WalMart, and much more!
- * Quick Access to Highway 55



Contact:

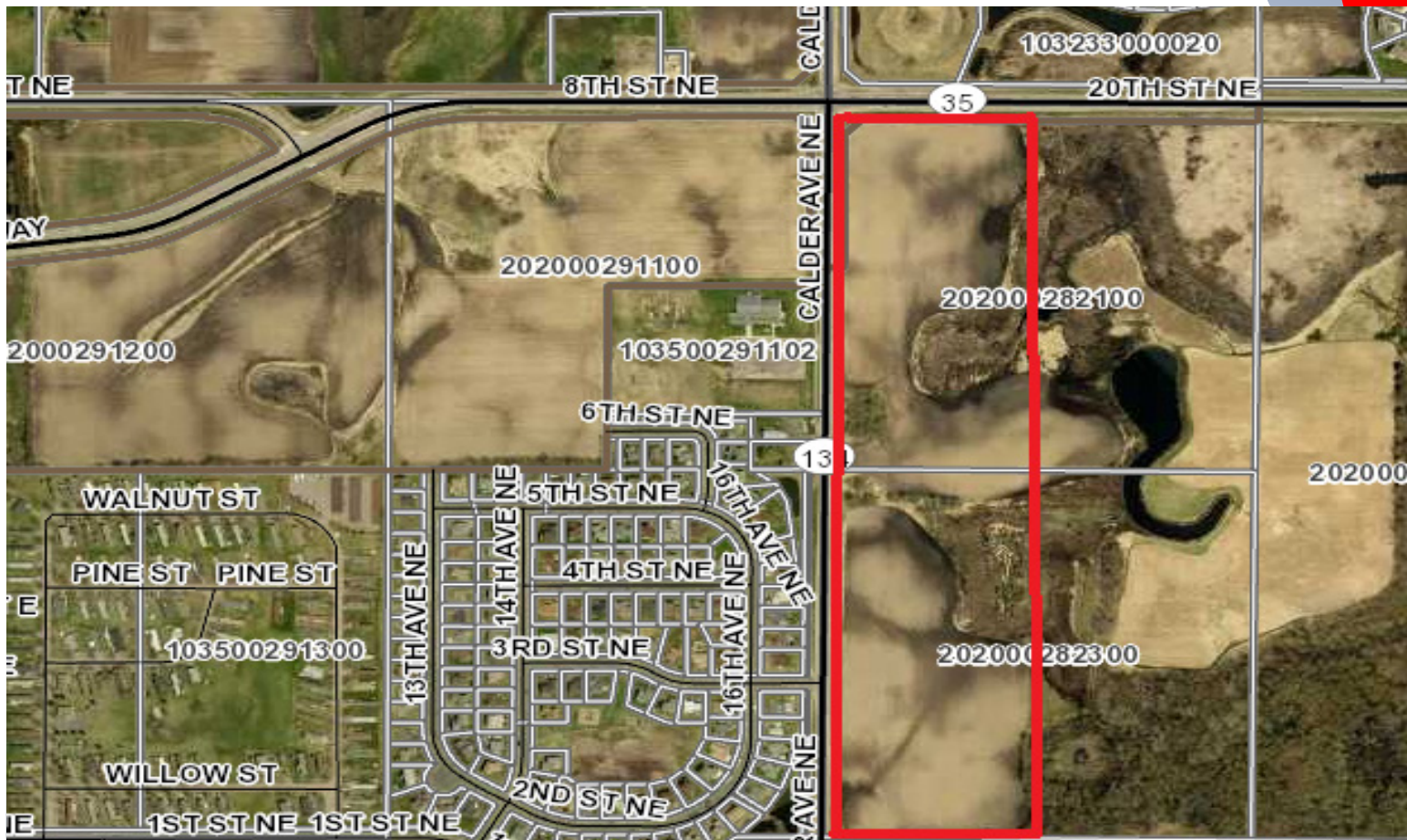
WAYNE ELAM
(763) 229-4982

WElam@commrealtysolutions.com

3 Highway 55 West, Buffalo, MN 55313 cell 763 229 4982 office 763 682 2400 fax 763 682 4524 www.commrealtysolutions.com

Buffalo - Commercial/Residential Land FOR SALE

C.R. 35 & C.R. 134, Buffalo, MN 55313



PROPERTY INFORMATION

- * Quick and easy access to Highway 55 and County Road 35
- * Major retailers in the area include Target, Menards, Cub Foods, Wal-Mart, and much more!



COMMERCIAL REALTY SOLUTIONS

TRAFFIC COUNTS - 2017

- * Highway 55 - 18,000 VPD
- * County Road 134 - 2,200 VPD
- County Road 35 - 3,850 VPD

Contact:

WAYNE ELAM
(763) 229-4982

WElam@commrealtysolutions.com

3 Highway 55 West, Buffalo, MN 55313 cell 763 229 4982 office 763 682 2400 fax 763 682 4524 www.commrealtysolutions.com