



COMMERCIAL REALTY SOLUTIONS
www.commrealtysolutions.com

Buffalo - Commercial Land

FOR SALE

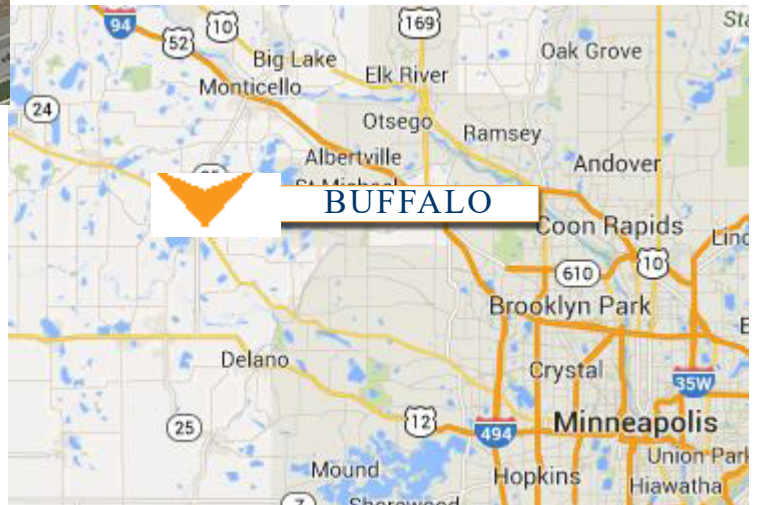
705 Highway 55, Buffalo, MN 55313



**Great Highway
Location!**

PROPERTY INFORMATION

- * Sales Price **\$7.50/psf**
- * Lot is 1.17 Acres Commercial Land
- * Wright County PID 103-249-000010
- * 2019 Taxes - \$4,608.00
- * Zoned: B-3 Highway Commercial
- * Adjacent to Lil Explorer Childcare
- * Businesses in the area include:
Ryan Chevrolet, Advance Auto Parts, Buffalo Wine & Spirits, Morrie's Buffalo Ford, Culver's Wells Fargo, Country Inn & Suites, Jimmy John's, DQ Grill & Chill, Culver's, Caribou, Einstein Bagel, Target and much more!



Contact:

WAYNE ELAM

(763) 229-4982

WElam@commrealtysolutions.com

3 Highway 55 West, Buffalo, MN 55313

office 763 682 2400 fax 763 682 4524

www.commrealtysolutions.com

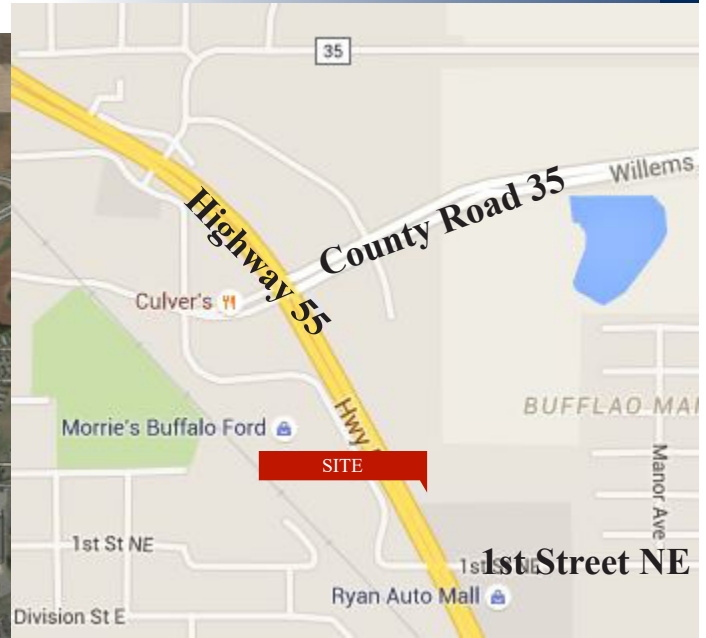
Buffalo - Commercial Land

FOR SALE

705 Highway 55, Buffalo, MN 55313

TRAFFIC COUNTS - 2018

- * Highway 55 - 17,000 VPD
- * County Road 35 - 8,300 VPD
- * 1st Street NE - 3,100 VPD



PROPERTY INFORMATION

- * North Side of Highway 55
- * East of Highway 25
- * 11 Miles to I-94



Contact:

WAYNE ELAM
(763) 229-4982

WElam@commrealtysolutions.com

3 Highway 55 West, Buffalo, MN 55313

office 763 682 2400

fax 763 682 4524

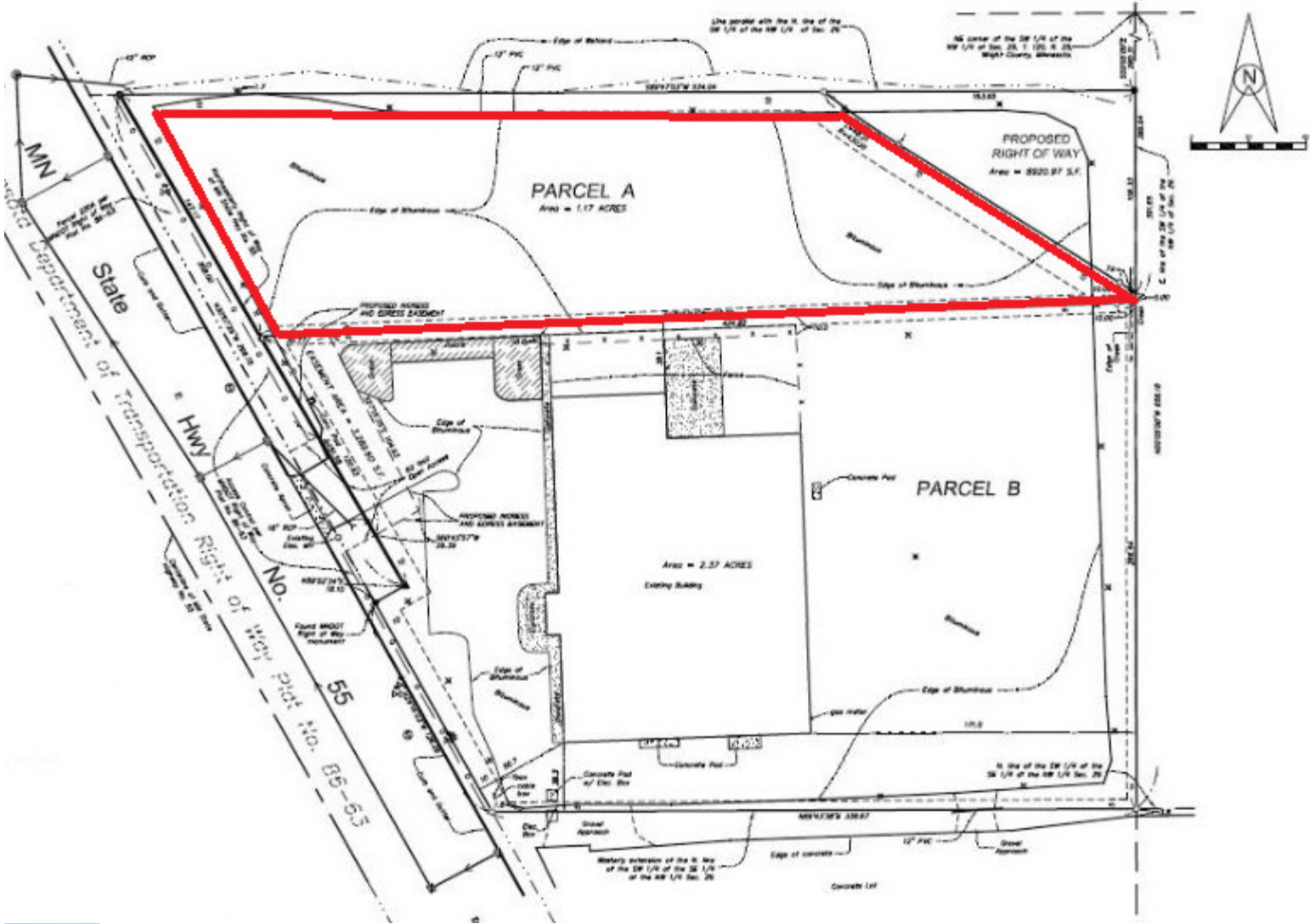
www.commrealtysolutions.com

Buffalo - Commercial Land

FOR SALE

705 Highway 55, Buffalo, MN 55313

Survey



DEMOGRAPHICS 2016	3 Mile	5 Mile	10 Mile
Population	16,636	22,337	25,485
Median Age	41	42	41
Avg HH Inc.	\$ 57,394.00	\$ 62,254.00	\$ 63,785.00
Median HH Inc.	\$ 50,487.00	\$ 54,364.00	\$ 56,432.00



Contact:
WAYNE ELAM
(763) 229-4982
WElam@commrealtysolutions.com

3 Highway 55 West, Buffalo, MN 55313 office 763 682 2400 fax 763 682 4524 www.commrealtysolutions.com

The information contained herein was obtained from sources believed to be reliable, but Commercial Realty Solutions, LLC has not verified nor has any knowledge regarding the accuracy of information and makes no representation or warranty concerning the same. Therefore, Commercial Realty Solutions, LLC disclaims all liabilities in connection with any inaccuracies or incompleteness.