

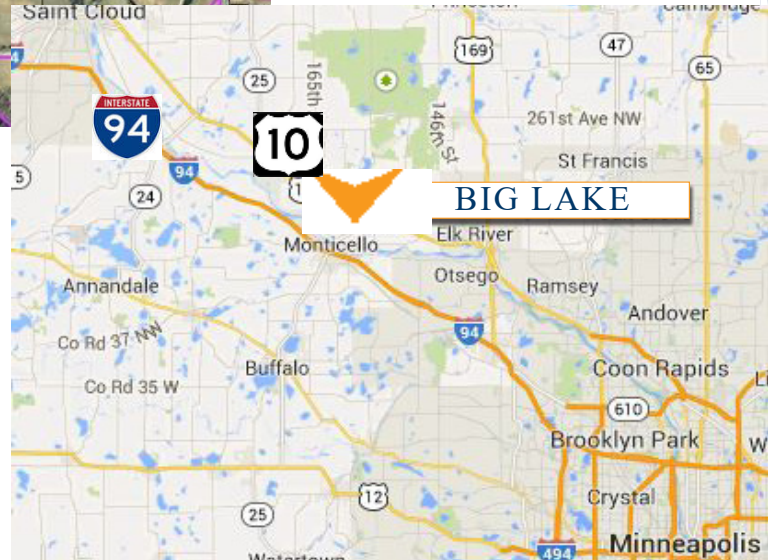


COMMERCIAL REALTY SOLUTIONS
www.commrealtysolutions.com

Big Lake - Residential Development Land FOR SALE

xxx Sandbar Lane, Big Lake, MN 55309

Residential Development Land



PROPERTY INFORMATION

- * Sales Price **\$350,000.00**
- * Parcel is 233.79 Acres
- * Sherburne County
- * PID 65-545-0060 2017 Taxes \$3,602.00
- * PID 65-545-0050 2017 Taxes \$ 150.00
- * PID 65-545-0010 2017 Taxes \$2,482.00
- * Zoned: R-1 Residential
- * In the area:
Lakeside Park, Big Lake High School,
Russell's On The Lake, Super America, Holiday
Station, RiverWood Bank, Pizza Factory, Big
Lake City Hall, McDonald's and more!

Contact:

WAYNE ELAM
(763) 229-4982

WElam@commrealtysolutions.com

3 Highway 55 West, Buffalo, MN 55313

office 763 682 2400 fax 763 682 4524

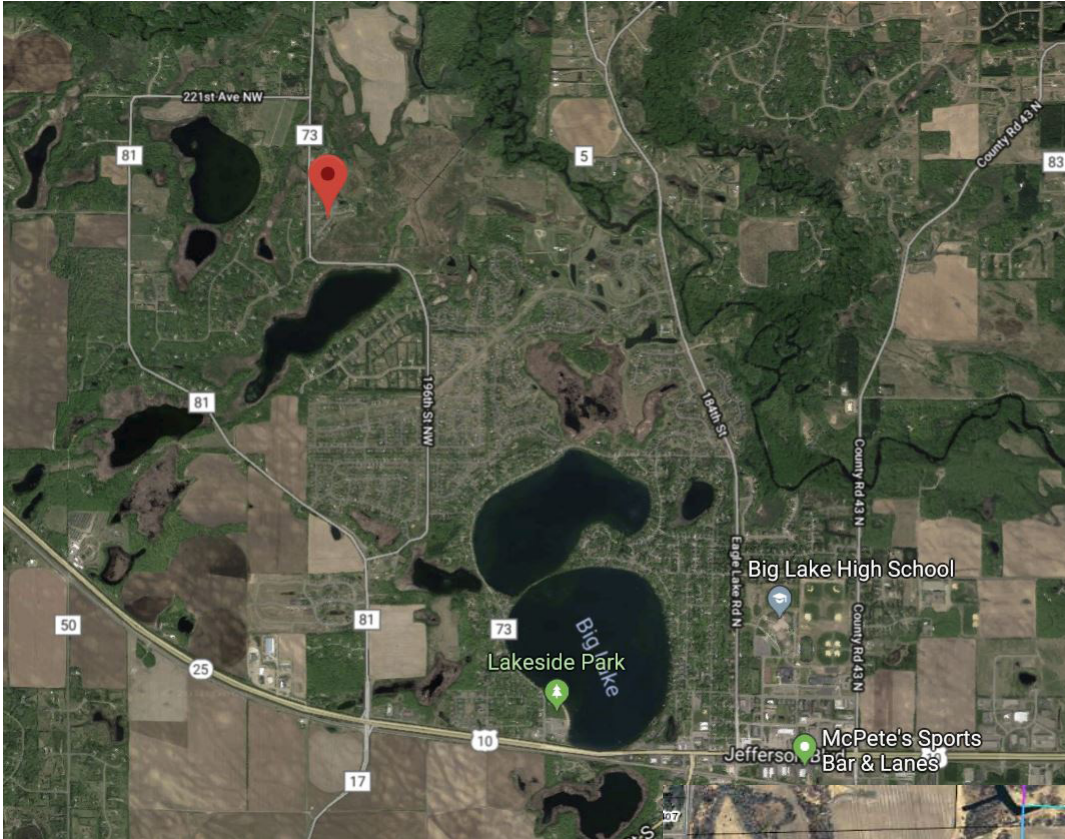
www.commrealtysolutions.com

Big Lake - Residential Development Land FOR SALE

xxx Sandbar Lane, Big Lake, MN 55309

TRAFFIC COUNTS - 2017

- * Highway 25 - 27,500 VPD
- * I-94 - 56,000 VPD
- * Chelsea Road - 1,750 VPD



PROPERTY INFORMATION

- * Located North of Highway 10
- * Great Residential location
- * Close to many amenities!



Contact:

WAYNE ELAM
(763) 229-4982

WElam@commrealtysolutions.com



3 Highway 55 West, Buffalo, MN 55313

office 763 682 2400 fax 763 682 4524

www.commrealtysolutions.com