

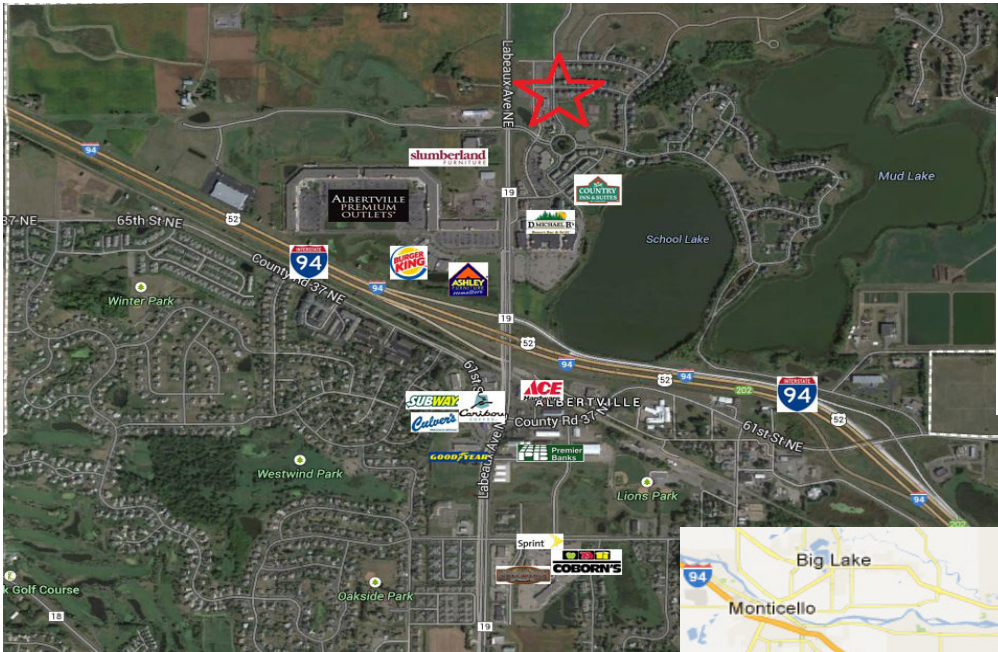


Albertville - The Shoppes of Towne Lakes

FOR SALE

Albertville, MN 55301

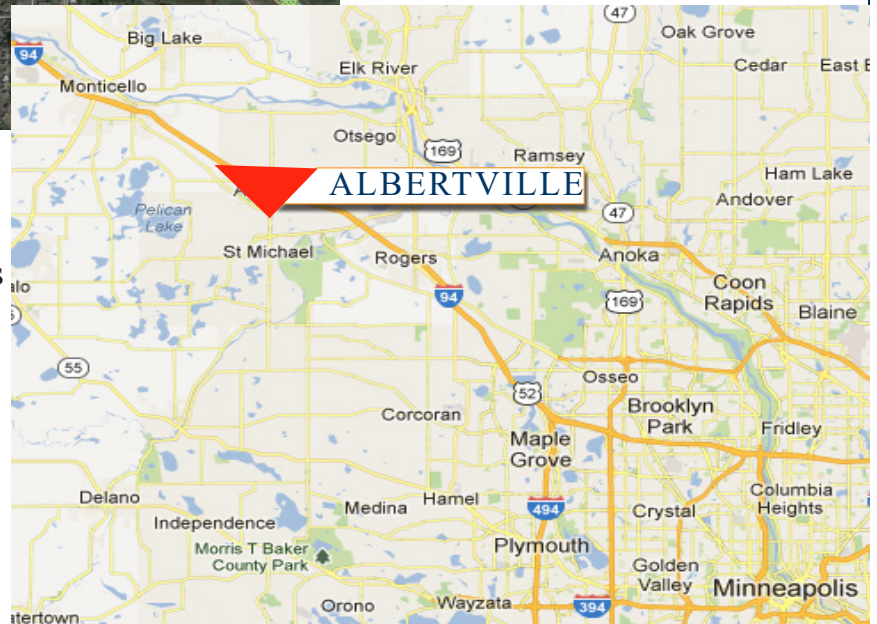
COMMERCIAL REALTY SOLUTIONS



Join the
Albertville Outlet
Mall Retail Area!

PROPERTY INFORMATION

- * Multiple Lots For Sale
- * Sizes Range From 44,945/sf to 7.63 Acres of Commercial Land
- * Lots priced from **\$5.00 - \$9.00/psf**
- * Located near the Albertville Premium Outlet Mall
- * Check out the Shoppes nearby at <http://www.premiumoutlets.com>
- * Zoning: B-2A Special Business District
- * City of Albertville is one of the fastest growing areas in the state!
- * South of future Inter-Change at County Road 19 and County Road 37



Contact:

SHEILA ZACHMAN

(763) 244-0600

SZachman@commrealtysolutions.com

3 Highway 55 West, Buffalo, MN 55313

office 763 682 2400 fax 763 682 4524

www.commrealtysolutions.com

The information contained herein was obtained from sources believed to be reliable, but Commercial Realty Solutions, LLC has not verified nor has any knowledge regarding the accuracy of information and makes no representation or warranty concerning the same. Therefore, Commercial Realty Solutions, LLC disclaims all liabilities in connection with any inaccuracies or incompleteness.

Albertville - The Shoppes of Towne Lakes

FOR SALE

Albertville, MN 55301

TRAFFIC COUNTS - 2017

* I-94 - 72,000 VPD

* County Road 19 - 16,700 VPD

PROPERTY INFORMATION



* **Outlot A** - 7.63 Acres (Divisible)

Sales Price \$5.00/psf

Wright County PID 101-113-000010

2019 Taxes \$6,520.00

* **Lot 1** - 53,029/sf (1.23 Acres)

(Has footings for a 10,000/sf Building 50' x 200') and 42 Parking Spaces)

Sales Price \$7.00/psf

Wright County PID 101-116-001010

2019 Taxes \$3,904.00

* **Lot 2** - 53,200/sf (1.22 Acres)

Sales Price \$7.00/psf

Wright County PID 101-116-001020

2019 Taxes \$5,670.00

* **Lot 3** - 44,945/sf (1.03 Acres)

(Has footings for an 8,000/sf Building with 44 Parking spaces)

Sales Price \$9.00/psf

Wright County PID 101-116-001030

2019 Taxes \$4,782.00

* **Lot 4** - 53,264/sf (1.22 Acres)

(Lot has a 5,000/sf Building Shell 50' x 100' and 71 Parking Spaces)

Sales Price \$449,000.00

Wright County PID 101-116-001040

2018 Taxes \$10,788.00



COMMERCIAL REALTY SOLUTIONS

Contact:

SHEILA ZACHMAN

(763) 244-0600

SZachman@commrealtysolutions.com

West bound Off ramp to County Road 19 allows for easy access!

County Road 38/70th Street extends thru to Highway 101!

3 Highway 55 West, Buffalo, MN 55313

office 763 682 2400 fax 763 682 4524

www.commrealtysolutions.com