



COMMERCIAL REALTY SOLUTIONS
www.commrealtysolutions.com

Albertville - Commercial Land FOR SALE

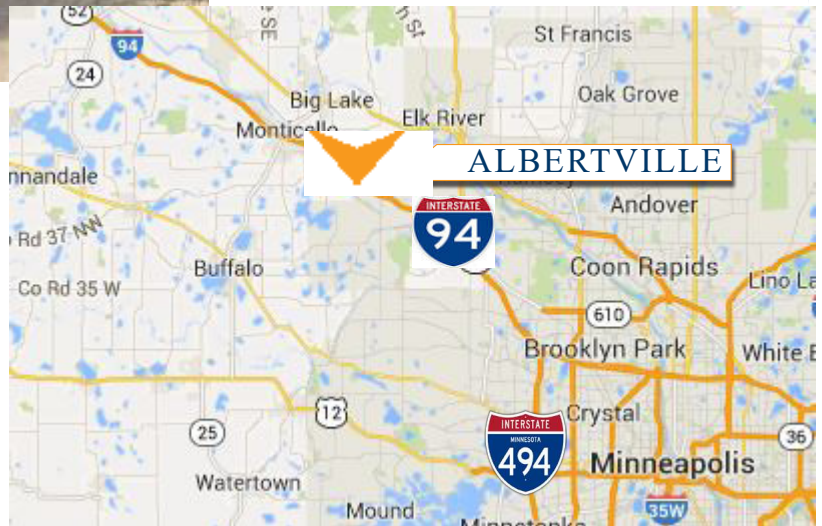
5953 Labeaux Ave NE, Albertville, MN 55301



C.R. 19 Frontage

PROPERTY INFORMATION

- * Sales Price **\$6.99/psf**
- * Property is 4.64 Acres (202,118/sf)
- * Wright County PID 101-500-021101
- * 2017 Taxes \$5,760.00
- * Wright County PID 101-500-012200
- * 2017 Taxes \$2.00
- * Zoned B-2A Special Business District
- * Buyer to remove House & Building
- * Businesses in the area include:
GoodYear Tire & Services, Dollar Tree,
Culver's, Casey's Gas Station, Coborn's,
offices and more . . .



Contact:
SHEILA ZACHMAN
(763) 244-0600

SZachman@commrealtysolutions.com

3 Highway 55 West, Buffalo, MN 55313

office 763 682 2400 fax 763 682 4524

www.commrealtysolutions.com

Albertville - Commercial Land

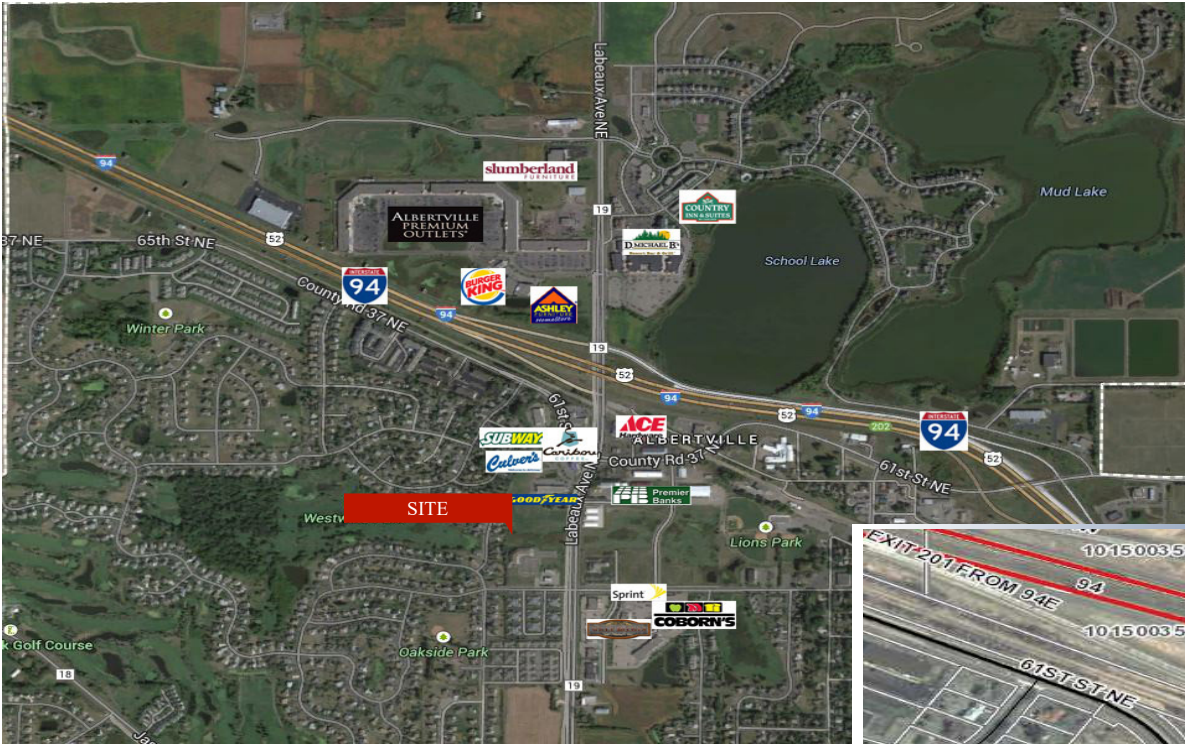
FOR SALE

5953 Labeaux Ave., Albertville, MN 55301

TRAFFIC COUNTS - 2017

* I-94 - 64,000 VPD

* C.R. 19/Labeaux - 12,900 VPD



PROPERTY INFORMATION

- * Located on the South side of I-94
- * Just 15 Miles to Maple Grove
- * Labeaux/County Road 19 Frontage



Contact:
SHEILA ZACHMAN
(763) 244-0600

SZachman@commrealtysolutions.com



3 Highway 55 West, Buffalo, MN 55313

office 763 682 2400

fax 763 682 4524

www.commrealtysolutions.com