



COMMERCIAL REALTY SOLUTIONS
www.commrealtysolutions.com

Albertville - Commercial Land

FOR SALE

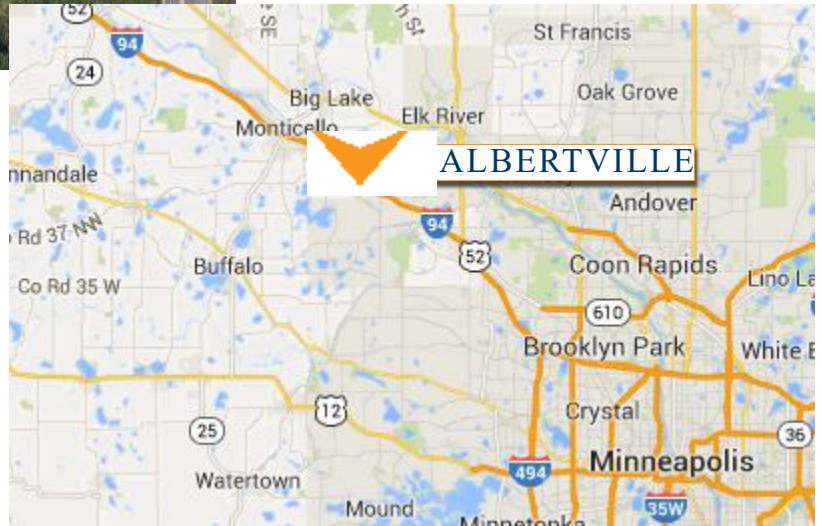
xxx 67th Street NE, Albertville, MN 55301



Great
Commercial
Parcel!

PROPERTY INFORMATION

- * SALES PRICE **\$4.00/psf**
- * Approximately 2.58 Acres Commercial Land
- * Wright County PID 101-091-002010
2017 Taxes \$5,708.88
- * Zoning B-2A Special Business District
- * Utilities available at 67th Street NE
- * Near Restaurants and Major Retailers
- * Check out the nearby Albertville Mall at
www.PremiumOutlets.com
- * South of future Inter-Change at County Road
19 (Labeaux Ave.) and County Road 37



Contact:

WAYNE ELAM

(763) 229-4982

WElam@commrealtysolutions.com



3 Highway 55 West, Buffalo, MN 55313 cell 763 229 4982 office 763 682 2400 fax 763 682 4524 www.commrealtysolutions.com

Albertville - Commercial Land

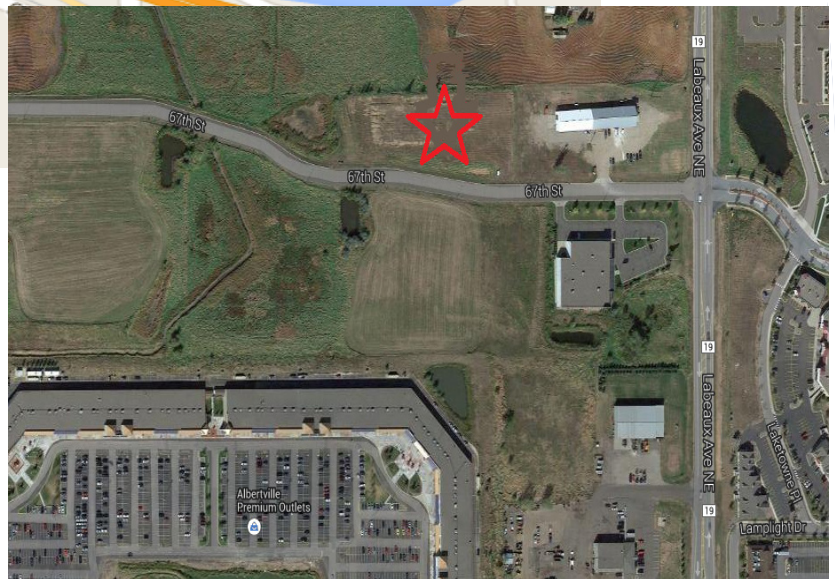
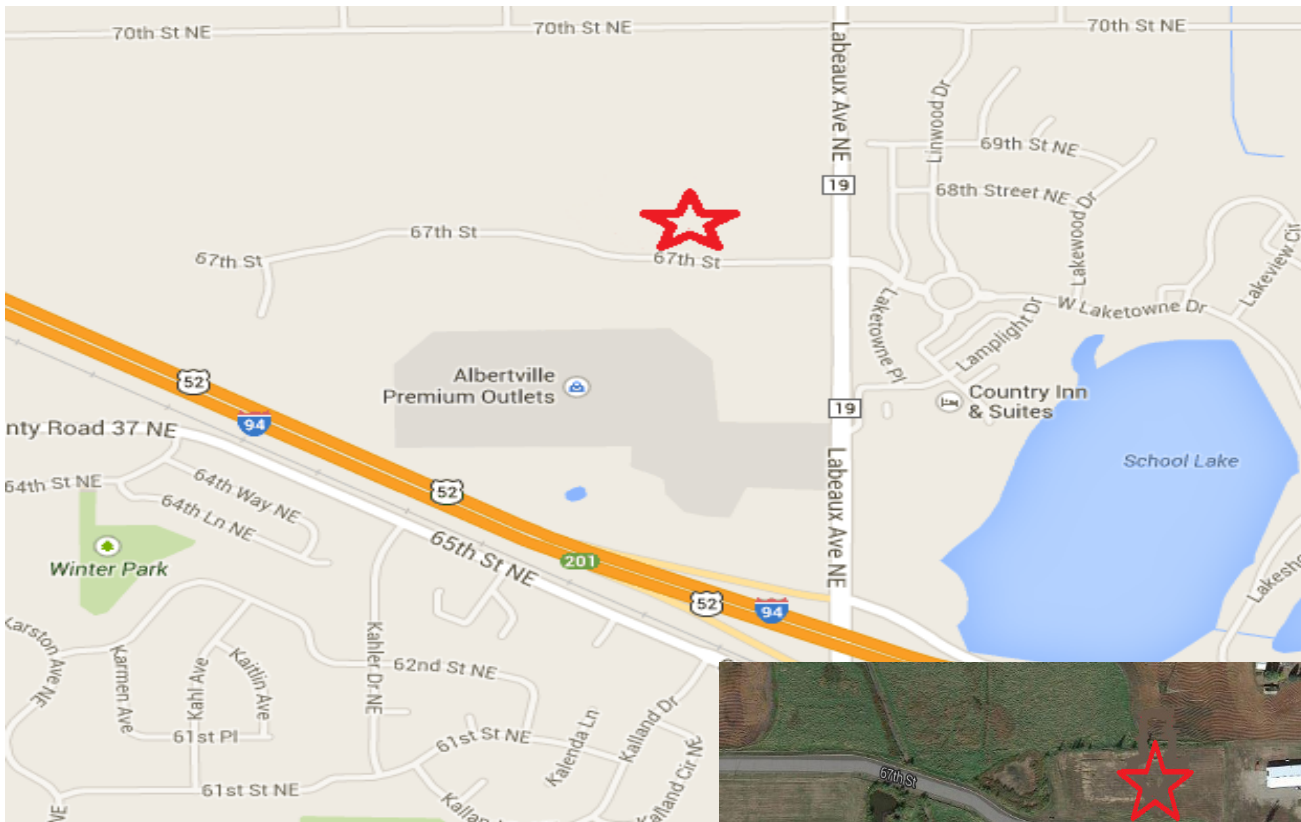
FOR SALE

xxx 67th Street NE, Albertville, MN 55301

TRAFFIC COUNTS - 2017

* I-94 - 52,000 VPD

* County Road 19 - 19,100 VPD



PROPERTY INFORMATION

- * Quick and easy access to I-94 and County Road 19/Labeau Avenue.
- * Businesses in the area include Burger King, D'Michael B's, Country Inn & Suites, Welcome Furniture, Subway, Casey's and much more!
- * 30 Minutes from Minneapolis



Contact:
WAYNE ELAM
(763) 229-4982
WElam@commrealtysolutions.com

3 Highway 55 West, Buffalo, MN 55313 cell 763 229 4982 office 763 682 2400 fax 763 682 4524 www.commrealtysolutions.com