



Big Lake - Residential Development Land FOR SALE

xxx Karen Lane, Big Lake, MN 55309

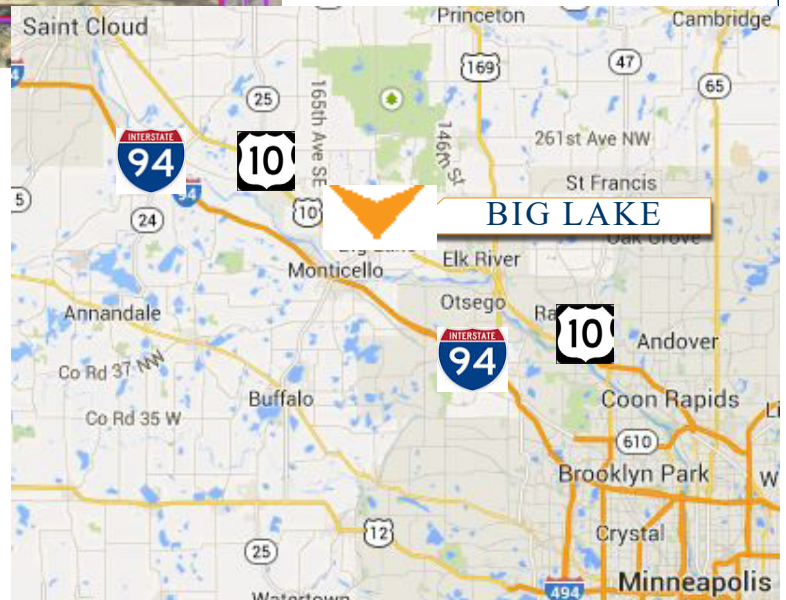
COMMERCIAL REALTY SOLUTIONS
www.commrealtysolutions.com



Residential Development Land

PROPERTY INFORMATION

- * Sales Price **\$499,000.00**
- * Property is 35.2 Acres
- * Sherburne County PID's
 - 65-533-0020 2017 Taxes \$644.00
 - 65-533-0030 2017 Taxes \$386.00
 - 65-533-0040 2017 Taxes \$504.00
 - 65-533-0060 2017 Taxes \$2,772.00
 - 65-533-0070 2017 Taxes \$2.00
 - 65-533-0080 2017 Taxes \$236.00
- * Residential Development Land
- * Close to Big Lake High School, Middle School, Independence Elementary School, Coborn's Superstore, Lake Center Liquor, McPete's Bar, Klein Bank, Lupulin Brewing and more!



Contact:
WAYNE ELAM
(763) 229-4982

WElam@commrealtysolutions.com

3 Highway 55 West, Buffalo, MN 55313

office 763 682 2400 fax 763 682 4524

www.commrealtysolutions.com

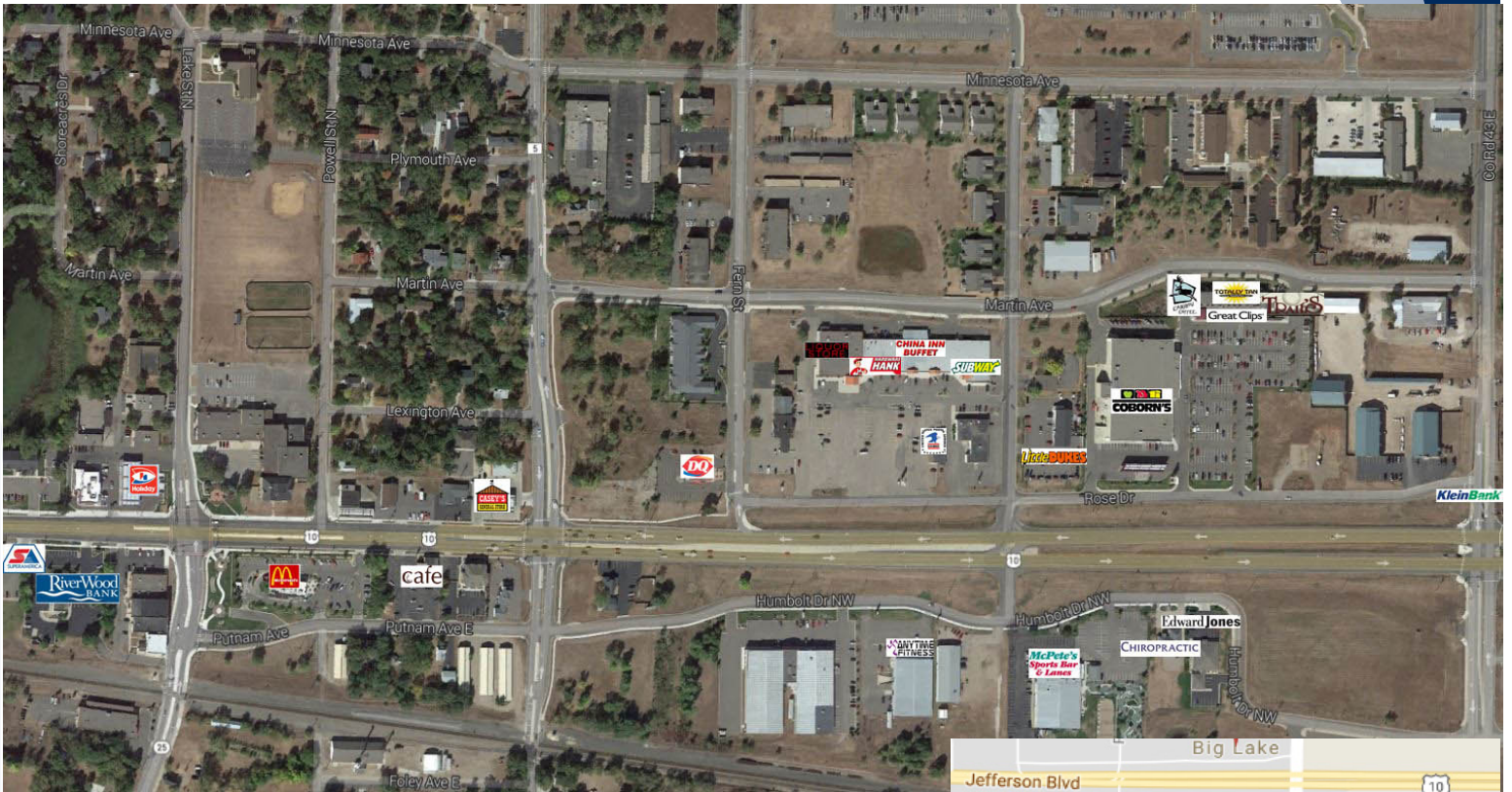
Big Lake - Residential Development Land FOR SALE

xxx Karen Lane, Big Lake, MN 55309

TRAFFIC COUNTS - 2016

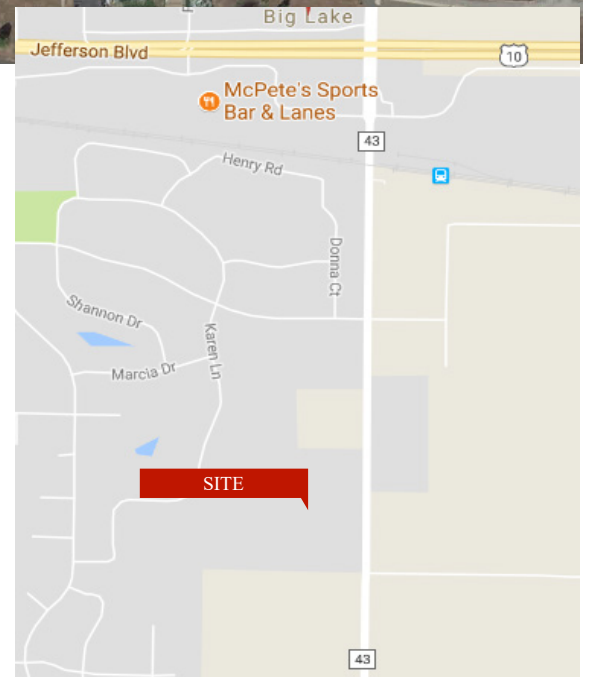
* Highway 10 - 16,300 VPD

* County Road 43 - 2,600 VPD



PROPERTY INFORMATION

- * Located on the South side of Highway 10
- * 10 Minutes to I-94
- * Near lots of services and shopping



Contact:
WAYNE ELAM
(763) 229-4982
WElam@commrealtysolutions.com

3 Highway 55 West, Buffalo, MN 55313

office 763 682 2400 fax 763 682 4524

www.commrealtysolutions.com