



Litchfield - Auto Sales & Service Facility FOR SALE

1325 Highway 12, Litchfield, MN 55355



**PRICE
REDUCED!**

PROPERTY INFORMATION

- * ~~\$1,290,000~~ REDUCED TO **\$875,000.00**
- * Building is 19,300 square feet
 - 2,400/sf Showroom
 - 1,200/sf Office
 - 2,000/sf Parts
 - 12,700/sf Shop
 - 1,000/sf Cold Storage
 - 3,000/sf Mezzanine
- * Parcel is 3.83 Acres
- * Meeker County PID 27-2814000
- * 2010 Taxes \$15,942.00
- * Building has 14' Sidewalls
- * Building has infrared heat
- * Zoning is B-4 Regional Business



Contact:

WAYNE ELAM
(763) 229-4982

WElam@commrealtysolutions.com

3 Highway 55 West, Buffalo, MN 55313 cell 763 229 4982 office 763 682 2400 fax 763 682 4524 www.commrealtysolutions.com

Litchfield - Auto Sales & Service Facility

FOR SALE

1325 Highway 12, Litchfield, MN 55355



**Great Location on
Highway 12!**

TRAFFIC COUNTS - 2009

*** Highway 12 - 8,400 VPD**

*** CSAH 34 - 4,800 VPD**



Contact:

WAYNE ELAM

(763) 229-4982

WElam@commrealtysolutions.com



3 Highway 55 West, Buffalo, MN 55313

cell 763 229 4982

office 763 682 2400

fax 763 682 4524

www.commrealtysolutions.com

Litchfield - Auto Sales & Service Facility

FOR SALE

1325 Highway 12, Litchfield, MN 55355



Contact:

WAYNE ELAM

(763) 229-4982

WElam@commrealtysolutions.com

3 Highway 55 West, Buffalo, MN 55313

cell 763 229 4982

office 763 682 2400

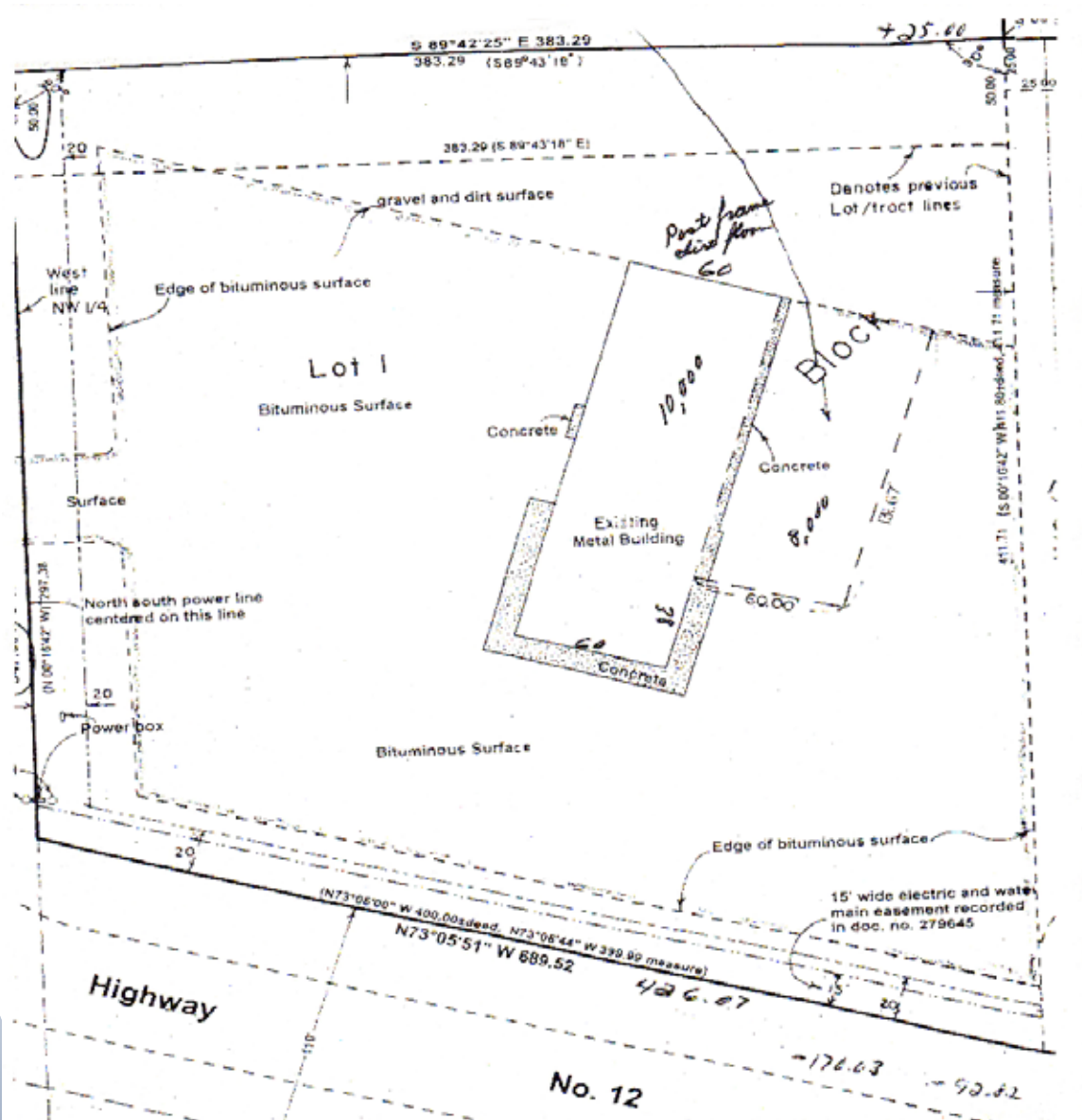
fax 763 682 4524

www.commrealtysolutions.com

Litchfield - Auto Sales & Service Facility

FOR SALE

1325 Highway 12, Litchfield, MN 55355



Contact:

WAYNE ELAM

(763) 229-4982

WElam@commrealtysolutions.com



3 Highway 55 West, Buffalo, MN 55313

cell 763 229 4982

office 763 682 2400

fax 763 682 4524

www.commrealtysolutions.com