



COMMERCIAL REALTY SOLUTIONS
www.commrealtysolutions.com

Rogers - Commercial Building FOR SALE

14005 Northdale Blvd, Rogers, MN 55374



Great location
with quick I-94
access!

PROPERTY INFORMATION

- * \$349,000.00
- * Building is 50' x 100' = 5,000/sf
- * Office is 1,000/sf
- * Lot is 248' x 527.99' = 3.0 Acres
- * Zoning - C-3: Commercial 3 District
- * Hennepin County PID 14-120-23-21-0010
- * 2011 Taxes \$16,269.00
- * Constructed in 1985
- * Near Restaurants and Major Retailers
- * Quick Access to I-94 and Highway 101
- * Roof was replaced in 2006
- * City sewer & water



TRAFFIC COUNTS - 2007

- * Highway 101 - 48,000 VPD
- * I-94 - 93,000 VPD



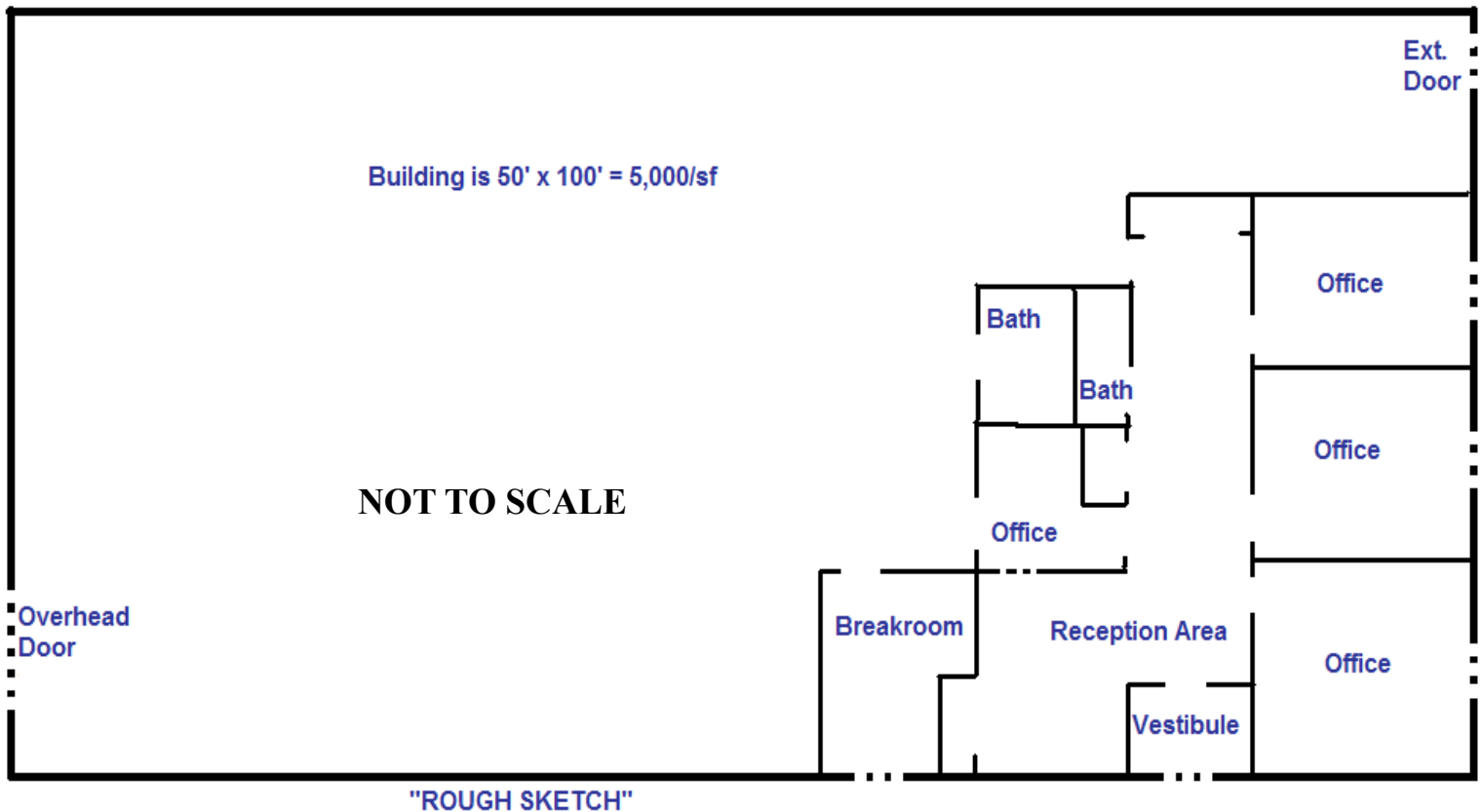
Contact:
WAYNE ELAM
(763) 229-4982

WElam@commrealtysolutions.com

Rogers - Commercial Building

FOR SALE

14005 Northdale Blvd, Rogers, MN 55374



PROPERTY INFORMATION

- * Quick and easy access to I-94 and Highway 101
- * Major retailers in the area include Super Target, Home Depot, Kohl's, Cub Foods, Applebee's, Culver's, Caribou Coffee, Starbuck's, Goodyear Tire, Fairview Clinic, Anytime Fitness, KinderCare, Cabella's and much more.
- * Ceiling height 12'
- * (1) One Loading Dock

Great Commercial Building!

Contact:

WAYNE ELAM
(763) 229-4982

WElam@commrealtysolutions.com



3 Highway 55 West, Buffalo, MN 55313 cell 763 229 4982 office 763 682 2400 fax 763 682 4524 www.commrealtysolutions.com

Rogers - Commercial Building

FOR SALE

14005 Northdale Blvd, Rogers, MN 55374



**Great
Commercial
Building!**



**Contact:
WAYNE ELAM
(763) 229-4982**

WElam@commrealtysolutions.com

3 Highway 55 West, Buffalo, MN 55313 cell 763 229 4982 office 763 682 2400 fax 763 682 4524 www.commrealtysolutions.com

The information contained herein was obtained from sources believed to be reliable, but Commercial Realty Solutions, LLC has not verified nor has any knowledge regarding the accuracy of information and makes no representation or warranty concerning the same. Therefore, Commercial Realty Solutions, LLC disclaims all liabilities in connection with any inaccuracies or incompleteness.