



COMMERCIAL REALTY SOLUTIONS  
www.commrealtysolutions.com

Aitkin - Sand & Gravel Pit

# FOR SALE

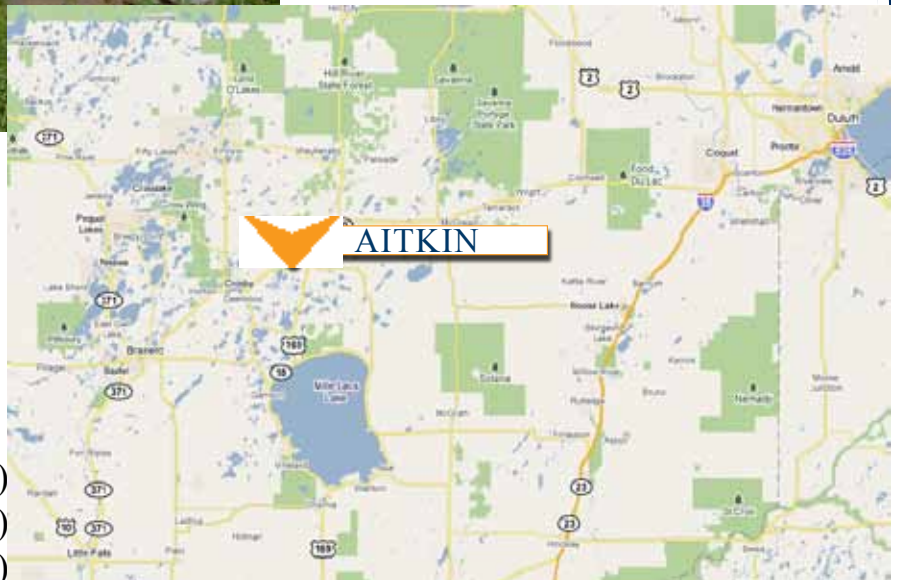
43398 320th Place, Aitkin, MN 56431

**Great central location!**



## PROPERTY INFORMATION

- \* \$895,000.00
- \* 106 Acres
- \* Post Frame Storage Building (with living quarters)
- \* Aitkin County PID's:
  - 08-0-024300 (2010 Taxes \$1,200.00)
  - 08-0-025800 (2010 Taxes \$1,018.00)
  - 08-0-025902 (2010 Taxes \$1,772.00)
  - 08-0-025901 (2010 Taxes \$1,168.00)
  - 08-1-064600 (2010 Taxes \$990.00)
  - 08-0-023001 (2010 Taxes \$104.00)
  - 08-0-024200 (2010 Taxes \$962.00)
- \* Located 14 Miles NE of Aitkin
- \* Surrounded by beautiful lakes
- \* Equipment Included



**Contact:**

**WAYNE ELAM**

**(763) 229-4982**

**WElam@commrealtysolutions.com**

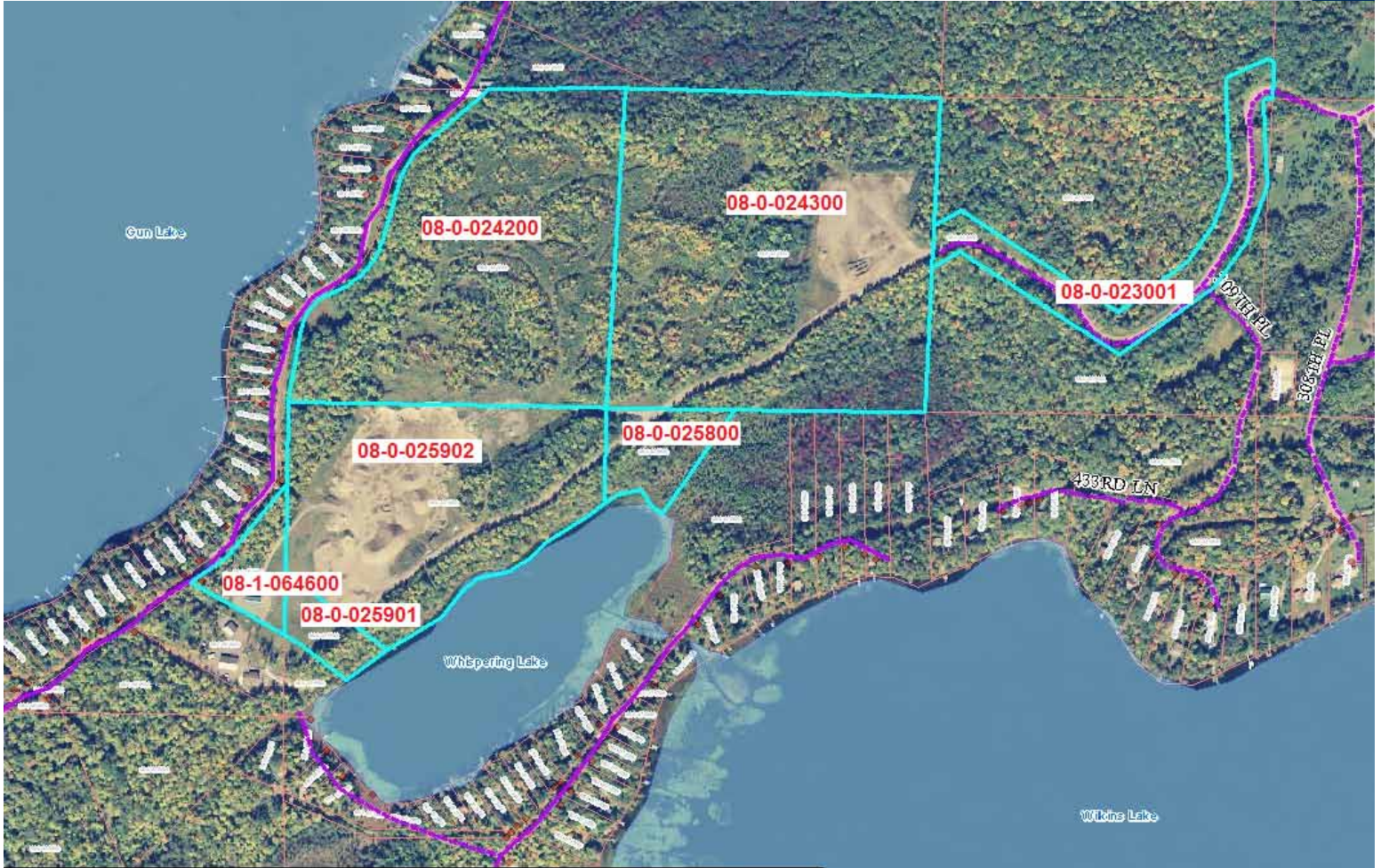


3 Highway 55 West, Buffalo, MN 55313 cell 763 229 4982 office 763 682 2400 fax 763 682 4524 www.commrealtysolutions.com

# Aitkin - Sand & Gravel Pit

# FOR SALE

43398 320th Place, Aitkin, MN 56431



08-0-024300	FLEMING TWP	GUN LAKE SAND & GRAVEL	59959 278TH ST	LITCHFIELD MN 55355
08-0-024200	FLEMING TWP	GUN LAKE SAND & GRAVEL	59959 278TH ST	LITCHFIELD MN 55355
	FLEMING TWP	GUN LAKE SAND & GRAVEL	59959 278TH ST	LITCHFIELD MN 55355
08-0-025902	FLEMING TWP	GUN LAKE SAND & GRAVEL	59959 278TH ST	LITCHFIELD MN 55355
08-0-025901	FLEMING TWP	GUN LAKE SAND & GRAVEL	59959 278TH ST	LITCHFIELD MN 55355
08-1-064600	FLEMING TWP	GUN LAKE SAND & GRAVEL	59959 278TH ST	LITCHFIELD MN 55355
08-0-023001	FLEMING TWP	GUN LAKE SAND & GRAVEL	59959 278TH ST	LITCHFIELD MN 55355



**Contact:**  
**WAYNE ELAM**  
**(763) 229-4982**

[WElam@commrealtysolutions.com](mailto:WElam@commrealtysolutions.com)

3 Highway 55 West, Buffalo, MN 55313 cell 763 229 4982 office 763 682 2400 fax 763 682 4524 [www.commrealtysolutions.com](http://www.commrealtysolutions.com)

The information contained herein was obtained from sources believed to be reliable, but Commercial Realty Solutions, LLC has not verified nor has any knowledge regarding the accuracy of information and makes no representation or warranty concerning the same. Therefore, Commercial Realty Solutions, LLC disclaims all liabilities in connection with any inaccuracies or incompleteness.

**Aitkin - Sand & Gravel Pit**

# **FOR SALE**

**43398 320th Place, Aitkin, MN 56431**



**Post Frame Building w/Living Quarters**



**EQUIPMENT INCLUDED:**

- \* John Deere 850 Dozer
- \* Hough H-100C Loader
- \* Allis Chalmers Grader

**Contact:**

**WAYNE ELAM**  
**(763) 229-4982**

**WElam@commrealtysolutions.com**



**3 Highway 55 West, Buffalo, MN 55313    cell 763 229 4982    office 763 682 2400    fax 763 682 4524    www.commrealtysolutions.com**

The information contained herein was obtained from sources believed to be reliable, but Commercial Realty Solutions, LLC has not verified nor has any knowledge regarding the accuracy of information and makes no representation or warranty concerning the same. Therefore, Commercial Realty Solutions, LLC disclaims all liabilities in connection with any inaccuracies or incompleteness.