



COMMERCIAL REALTY SOLUTIONS
www.commrealtysolutions.com

Clearwater—Commercial Land Adjacent to I-94

FOR SALE Clearview Industrial Park

2458 200th Street
Clearwater, MN 55319

CLEARVIEW TERRACE



PROPERTY INFORMATION

- \$79,900.00/Each Lot
- High visibility I-94
- Lot 11 Size: 1.15/acres
- Lot 12 Size: 1.15/acres
- Zoning: Industrial
- PID 19-10600-0012
- Great location with easy access to I-94



TRAFFIC COUNTS—2008

- I-94—39,000 VPD
- Highway 24—7,100 VPD

CONTACT:

Wayne Elam

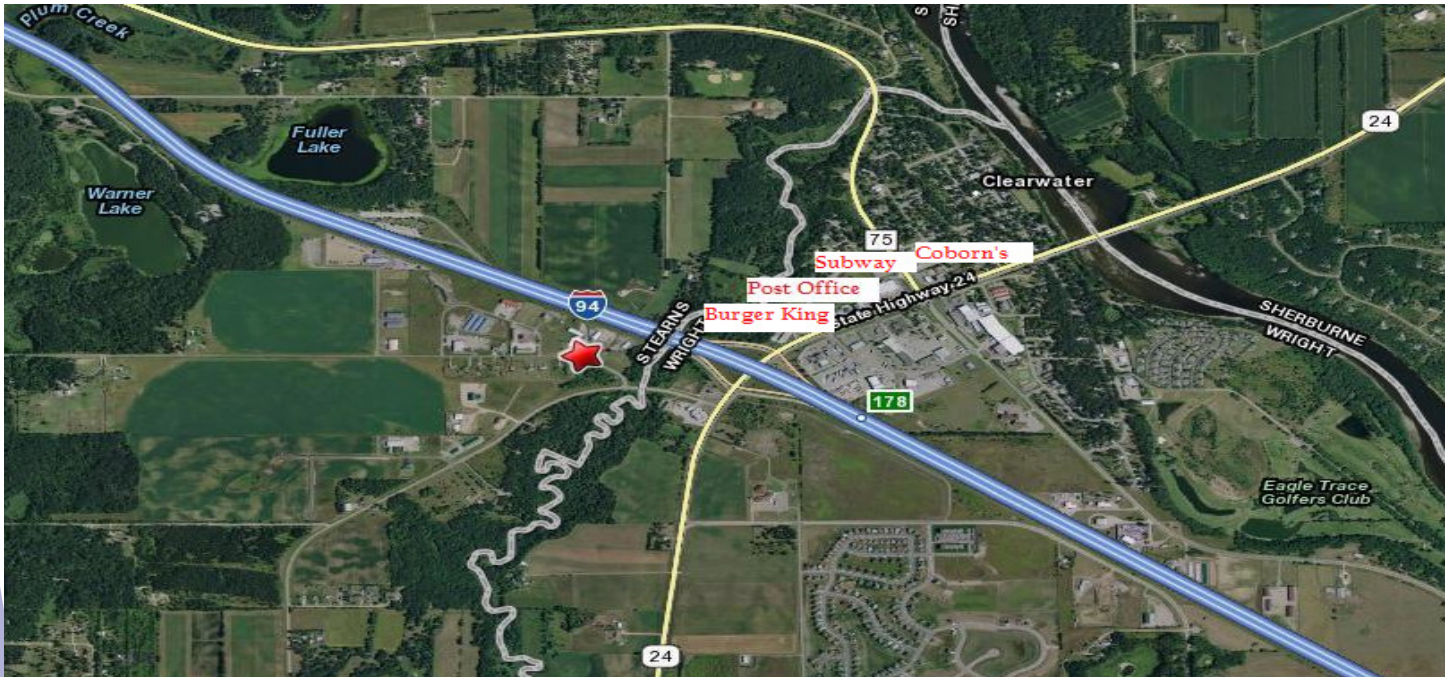
(763) 229-4982

WElam@CommRealtySolutions.com

Clearwater—Commercial Land

Adjacent to I-94

LAND FOR SALE



- Lot Size 1.15/Each Lot
- Clearview Industrial Park
- Zoning—Industrial
- Lynden Township, Stearns County
- Adjacent to I-94

CONTACT:

Wayne Elam

(763) 229-4982

WElam@CommRealtySolutions.com

