

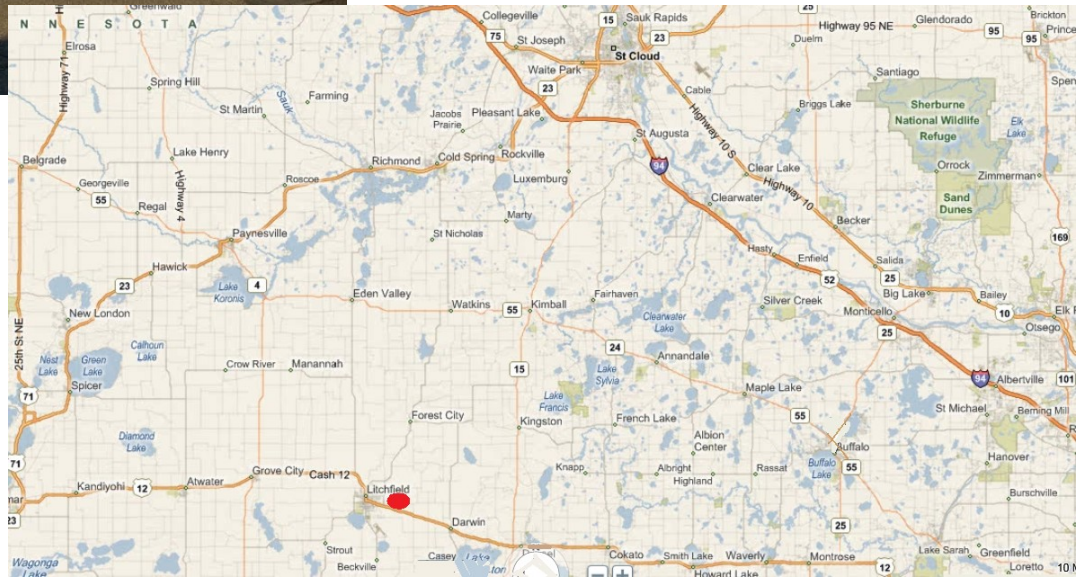


COMMERCIAL REALTY SOLUTIONS  
www.commrealtysolutions.com

# Litchfield—Residential Development Land County Road 34



## FOR SALE Residential Development Land Arnold's Addition Litchfield, MN



### PROPERTY INFORMATION

- \$119,900.00
- 26.17 Acres of Raw Land
- Meeker County
- PID 27-2878000
- A preliminary plat drawing shows 47 lots
- 75 Minutes from Downtown Minneapolis/St. Paul
- Growing Community
- Major commerce and shopping in area
- Easy access to Highway 12
- Great Educational System

### CONTACT:

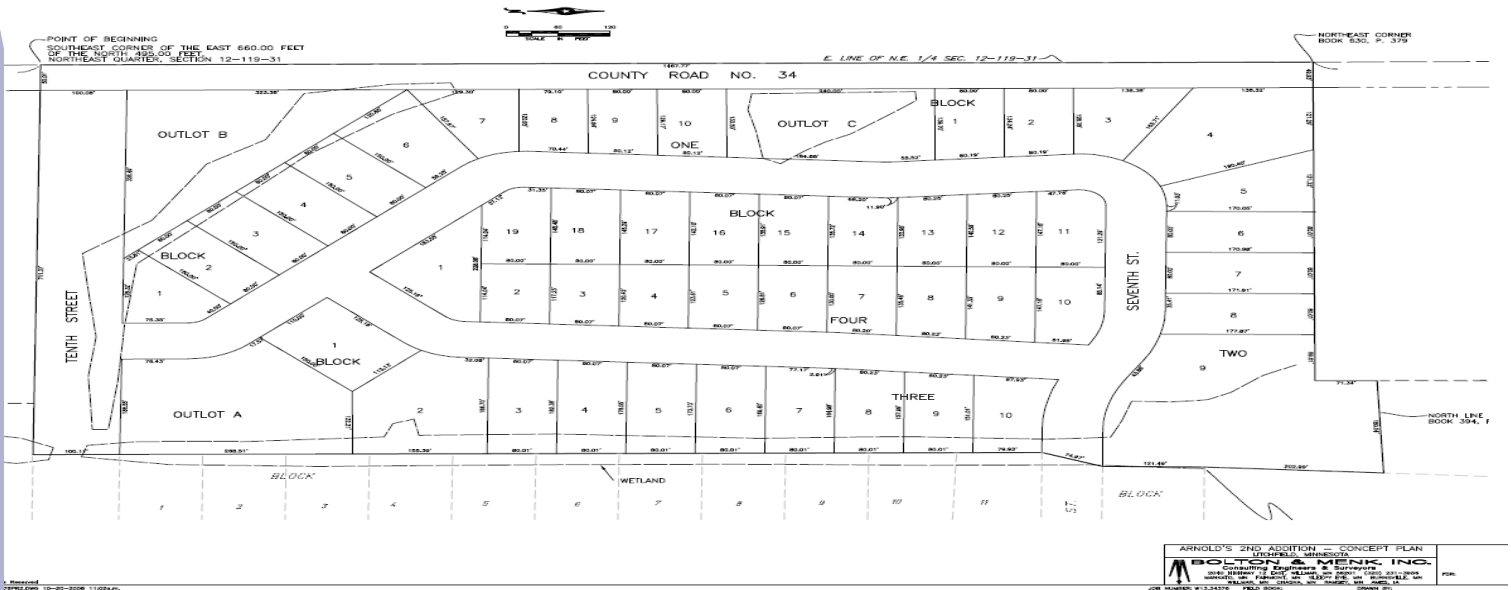
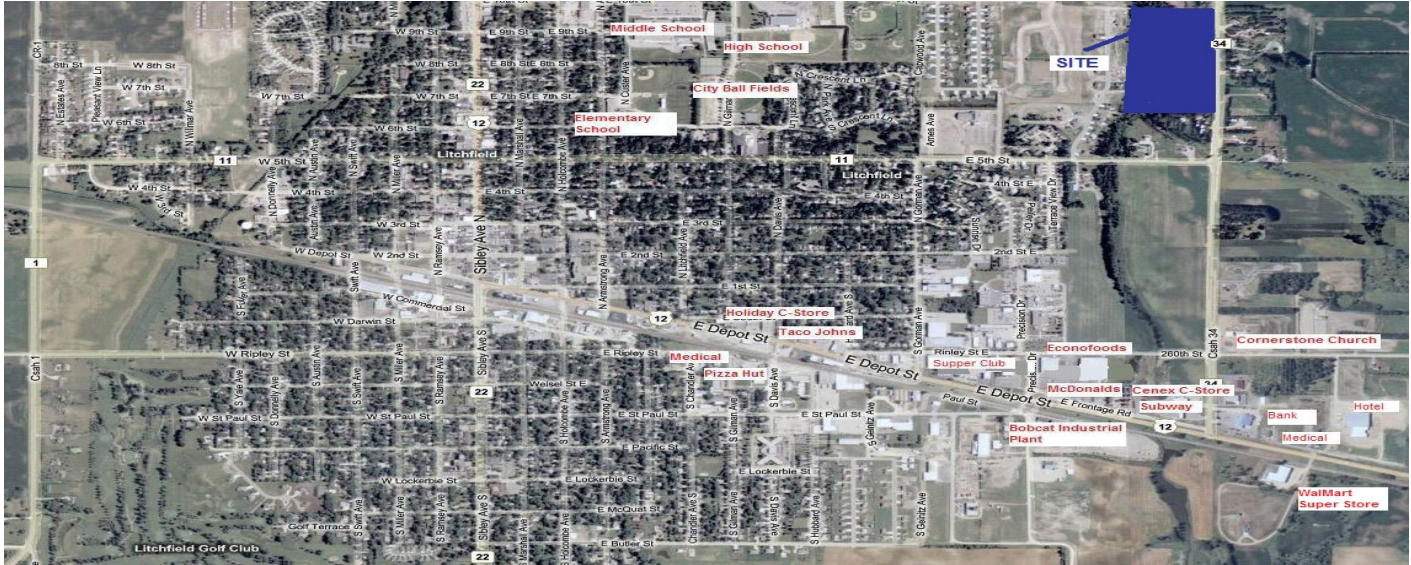
**Wayne Elam**  
**(763) 229-4982**

[WElam@CommRealtySolutions.com](mailto:WElam@CommRealtySolutions.com)

# Litchfield—Residential Raw Land

## County Road 34

# FOR SALE



**CONTACT:**

**Preliminary Plat**

**Wayne Elam**  
**(763) 229-4982**

[WElam@CommRealtySolutions.com](mailto:WElam@CommRealtySolutions.com)



# Litchfield—Residential Development

Land

County Road 24

# FOR SALE



crs COMMERCIAL REALTY SOLUTIONS  
www.commrealtysolutions.com  
**FOR SALE**  
WAYNE ELAM  
**763.229.4982**  
BANK OWNED 26 ACRES  
FUTURE RESIDENTIAL 119,900  
DEVELOPMENT OPPORTUNITY



**CONTACT:**

**Wayne Elam**

**(763) 229-4982**

[WElam@CommRealtySolutions.com](mailto:WElam@CommRealtySolutions.com)

